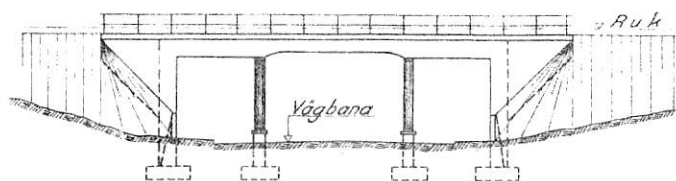
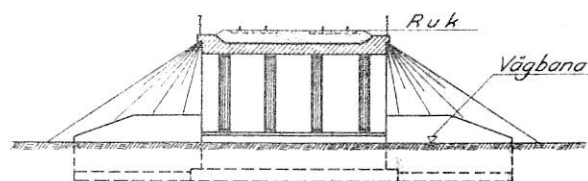


Vägport

Fig. 1-5



Elevation

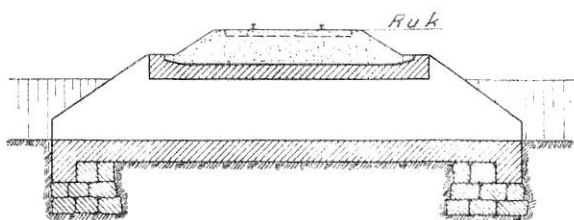


Tvärsektion

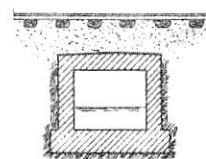
Skala
0 10 m

Fig. 1

Trumma



Längdsektion

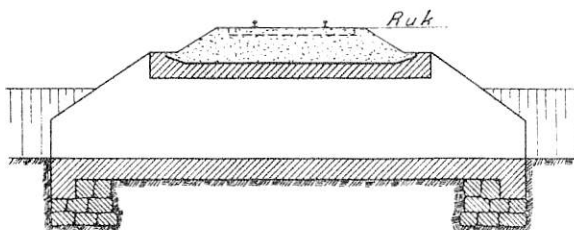


Tvärsektion

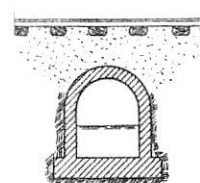
Skala
0 5 m

Fig. 2

Kulvert



Längdsektion

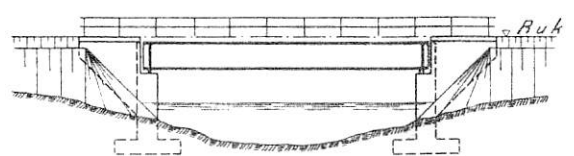


Tvärsektion

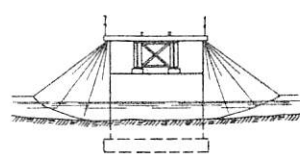
Skala
0 5 m

Fig. 3

Balkbro



Elevation

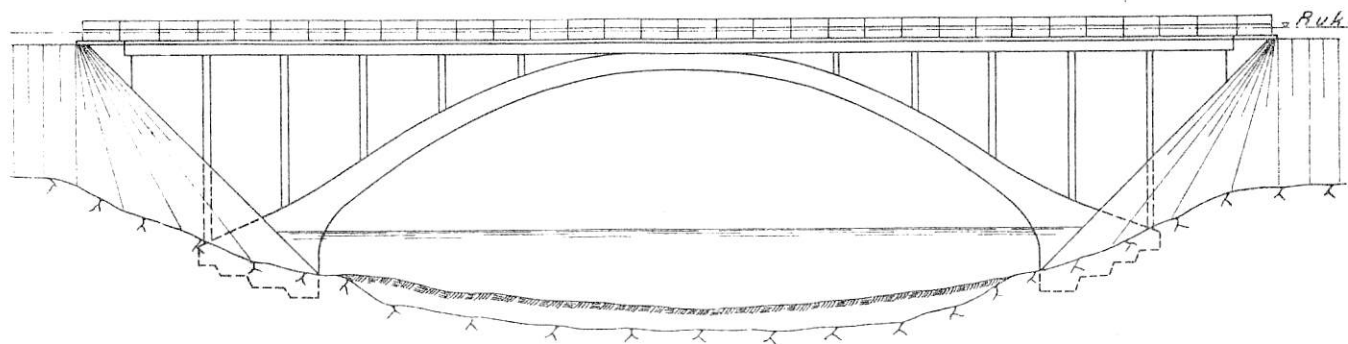


Tvärsektion

Skala
0 10 m

Fig. 4

Bågbro

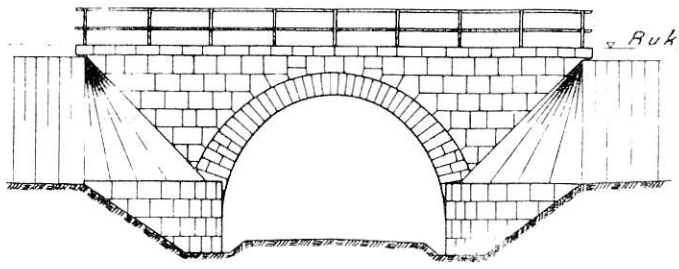


Elevation

Skala
0 10 m

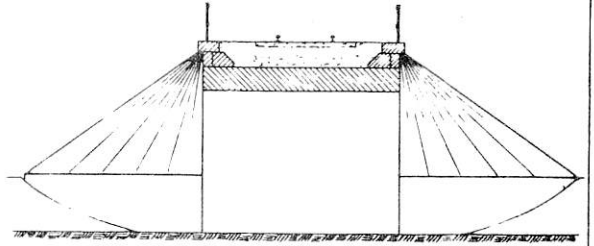
Fig. 5

Valvbro



Elevation

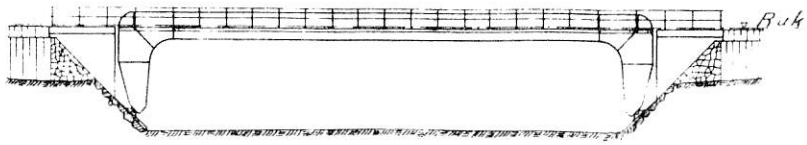
Skala 0 5m



Tvårsektion

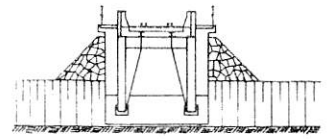
Fig 6

Rambro



Elevation

Skala 0 5 10m

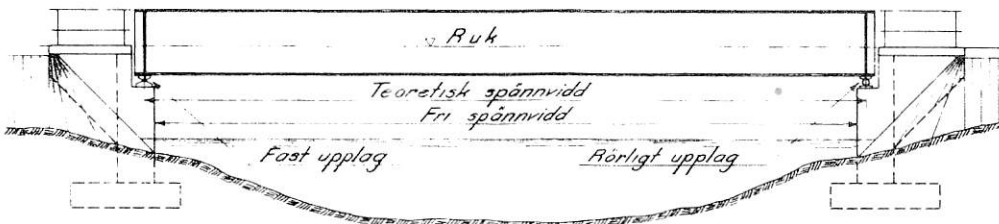


Tvårsektion

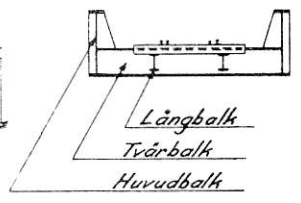
Fig 7

Stålbalkbro

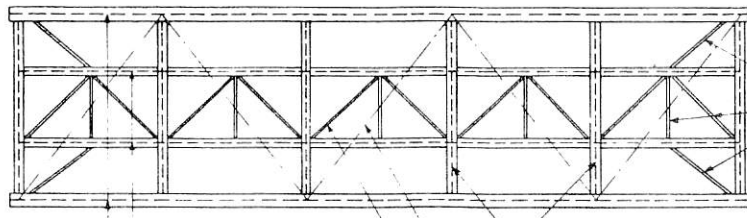
Elevation



Tvårsektion



Plan



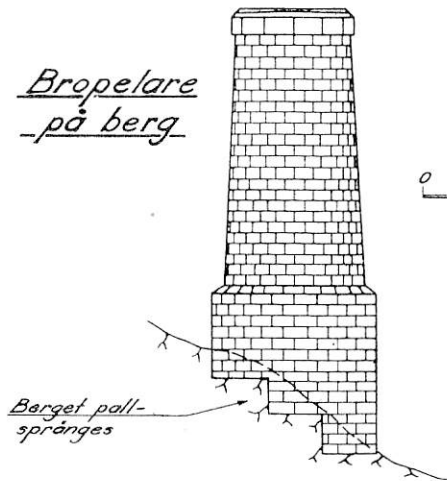
Bromsförband

Långbalk
Huvudbalkar
Tvårbalkar
Vindförband
Stöttörband

Skala 0 5m

Fig 8

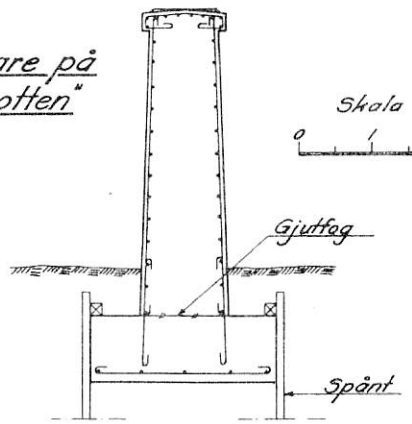
Bropelare på berg



Skala 0 1 2m

Fig 9

Bropelare på "fast botten"



Skala 0 1 2m

Fig 10

Bropelare på päl

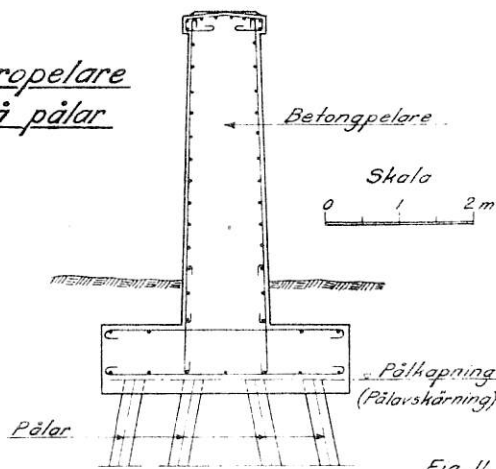


Fig 11

Pälsko för träpäl

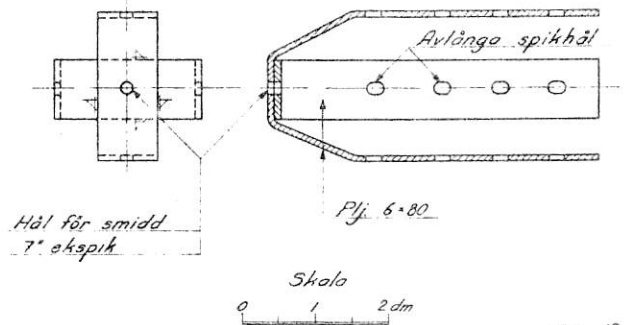
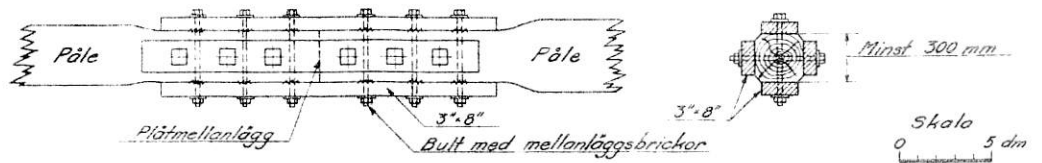


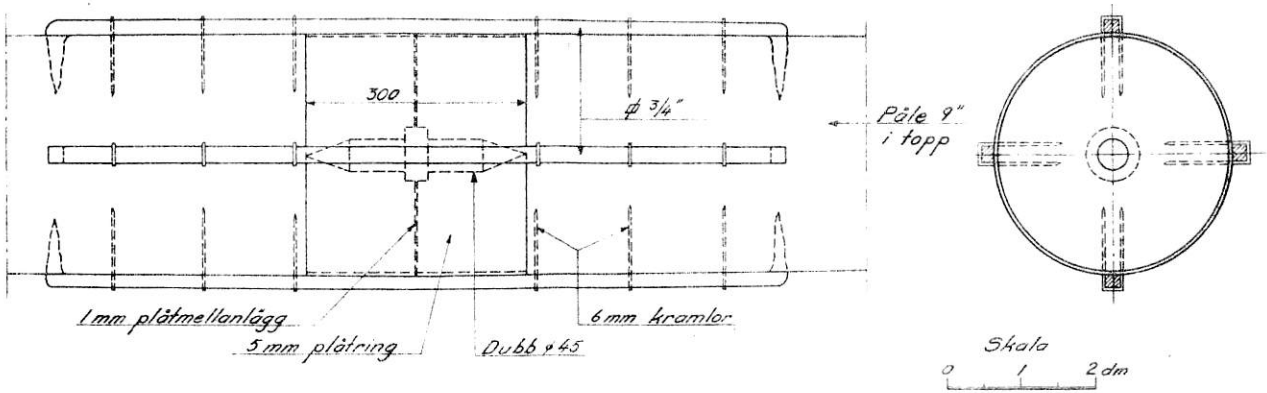
Fig 12

Skarvning av träpäl

Utförande 1



Utförande 2



Utförande 3

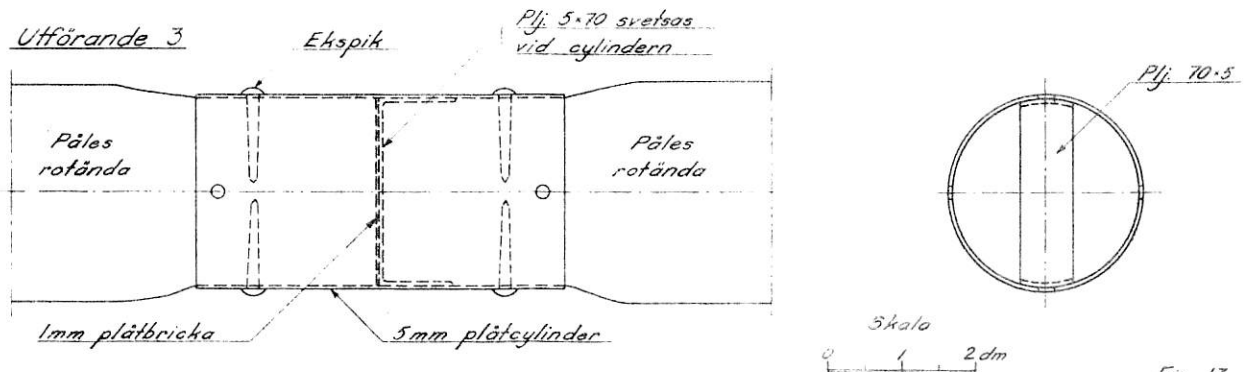


Fig 13

Betongpäl

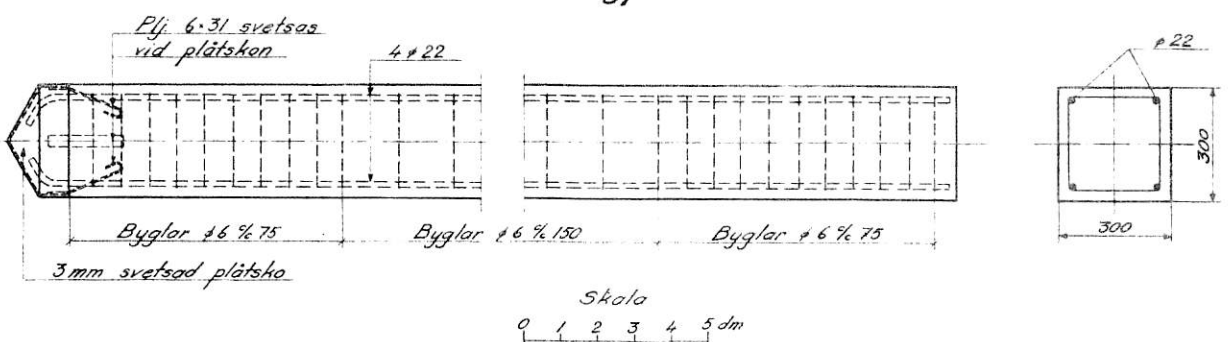


Fig 14

Träspänt

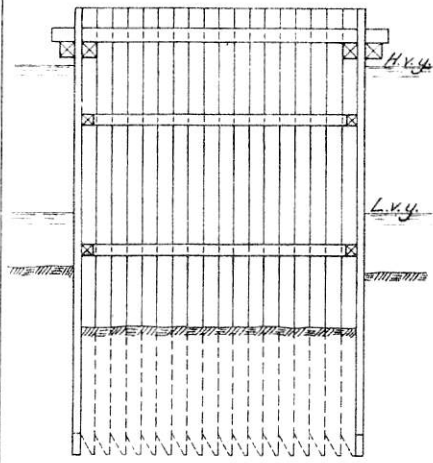


Fig. 15

Enkla fångdammar

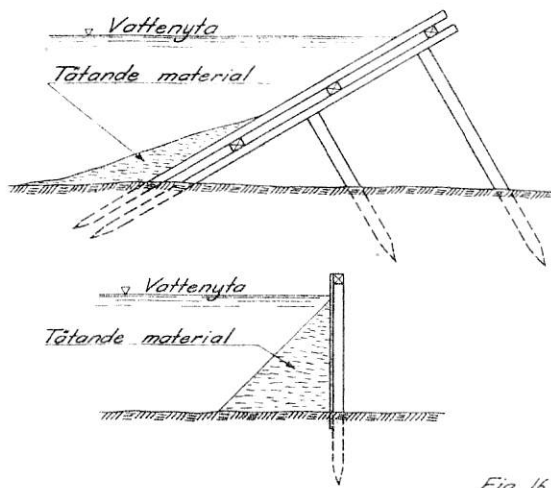


Fig. 16

Dubbel fång-
damm med pålväggar Fig. 15-24

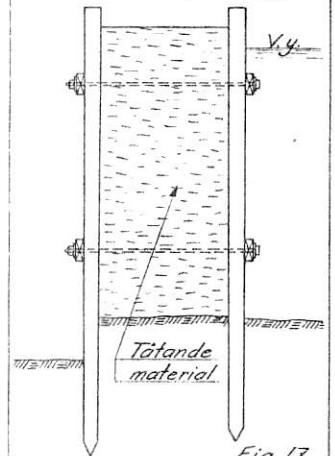


Fig. 17

Dubbel fångdamm
med liggande timmer

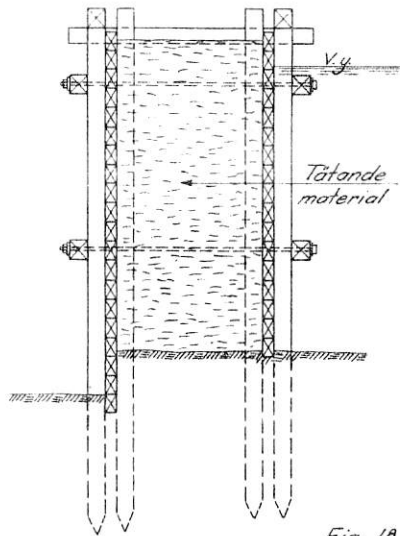


Fig. 18

Grundläggning med
nedsänkt kasun

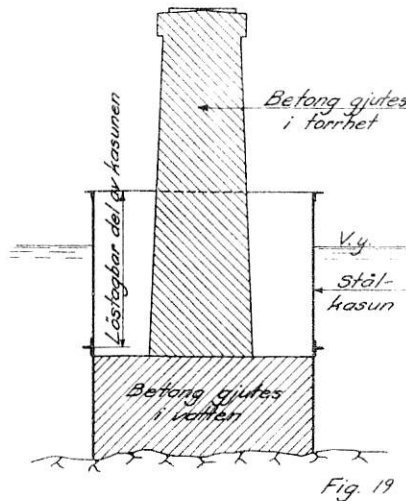


Fig. 19

Grundläggning med
flytande kasun

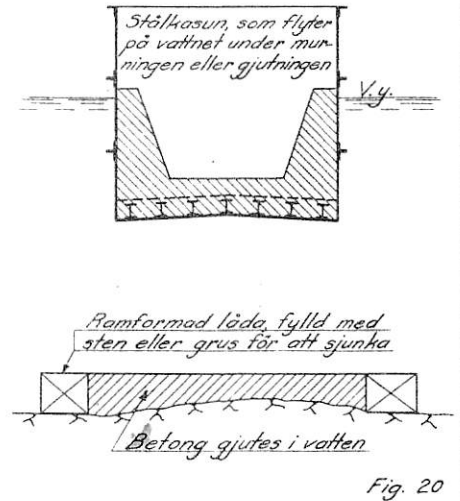


Fig. 20

Landfäste av stenvägg

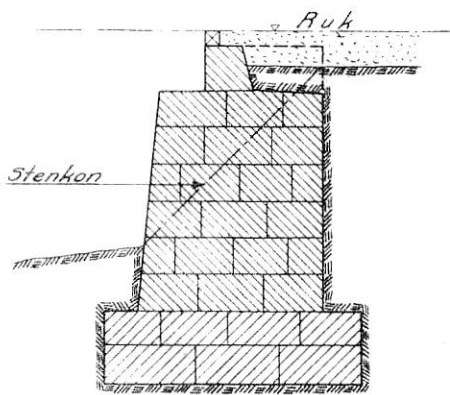


Fig. 21

Landfäste av armerad betong

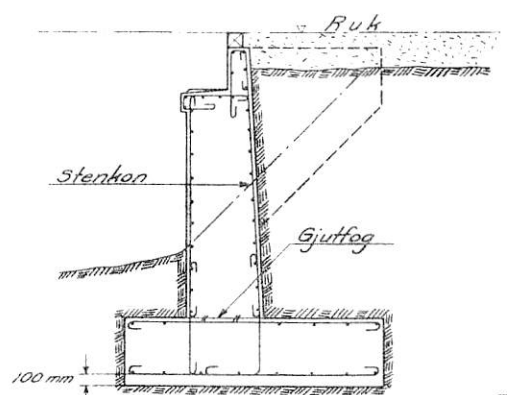


Fig. 22

Mellanstöd av stål

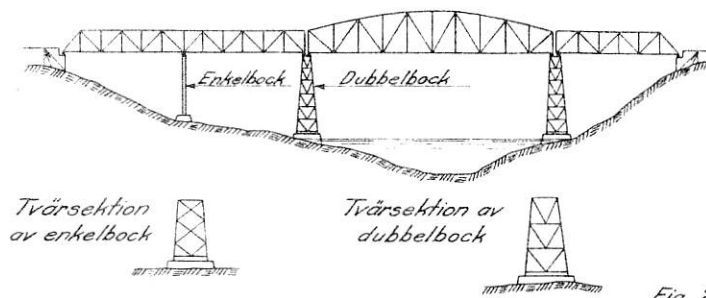


Fig. 23

Mellanstöd av stål
Ramkonstruktion

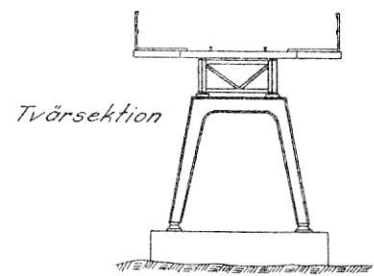


Fig. 24

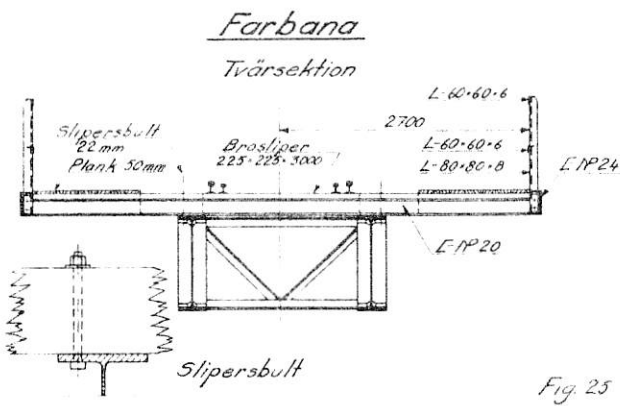


Fig 25

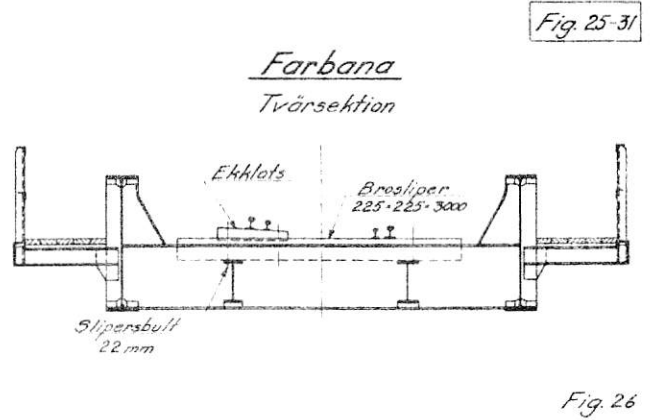


Fig 26

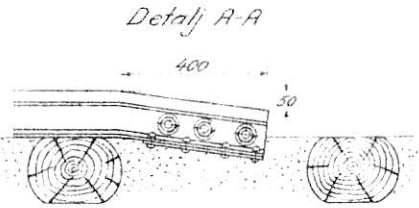
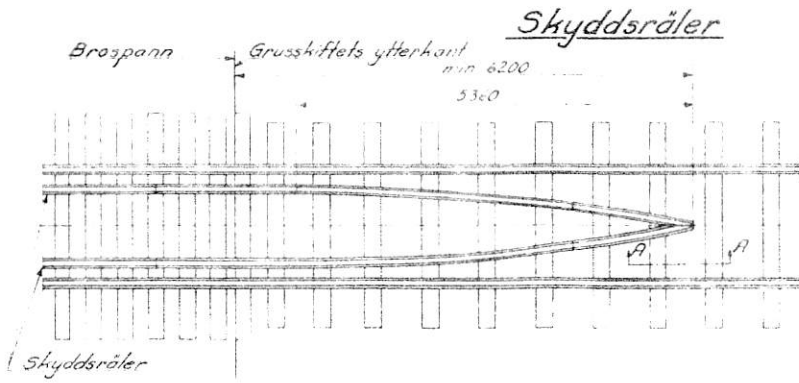


Fig 27

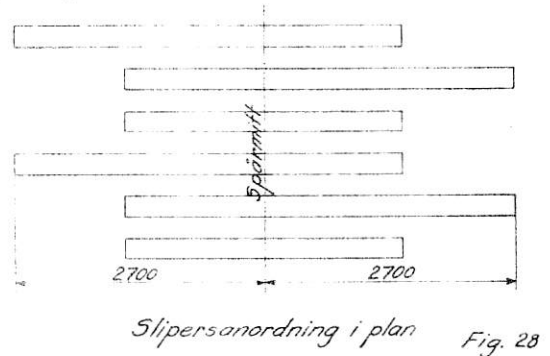
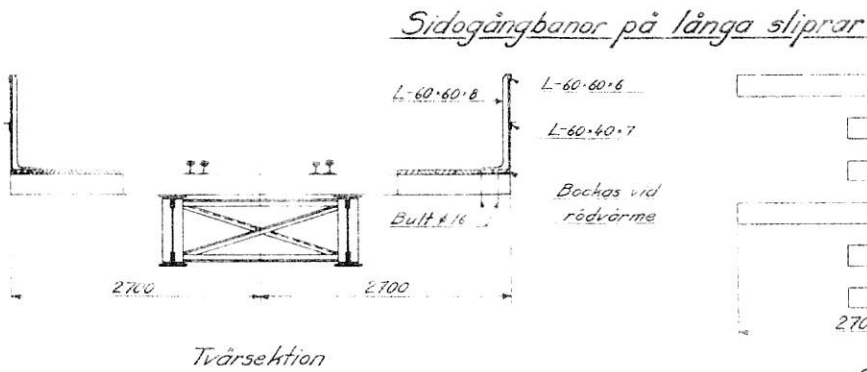


Fig 28

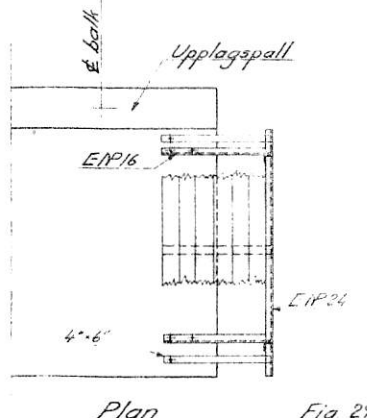
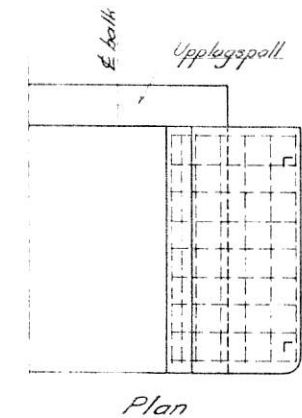
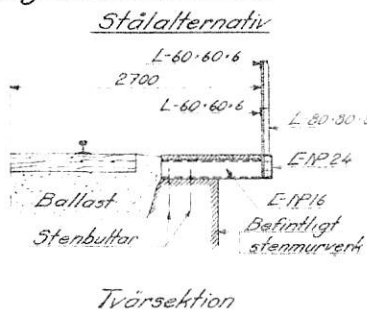
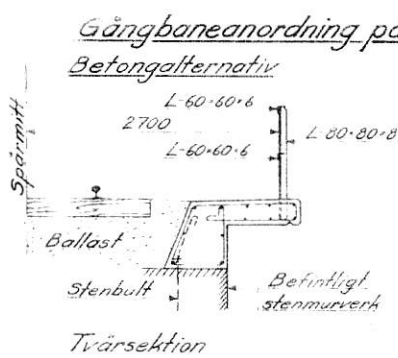


Fig 29

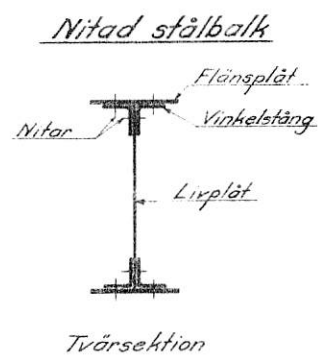


Fig 30

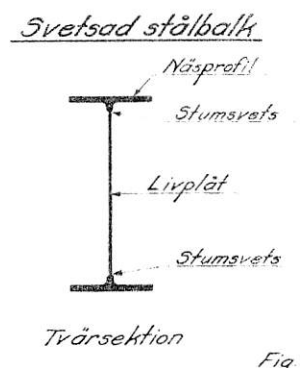


Fig 31

Stålöverbyggnad med 4 Dip-balkar

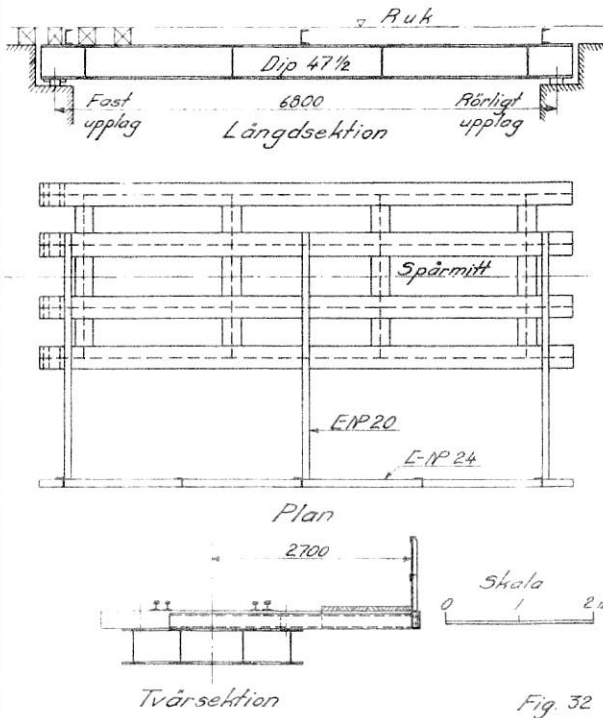


Fig. 32

Stålöverbyggnad med 2 svetsade balkar Fig. 32-36

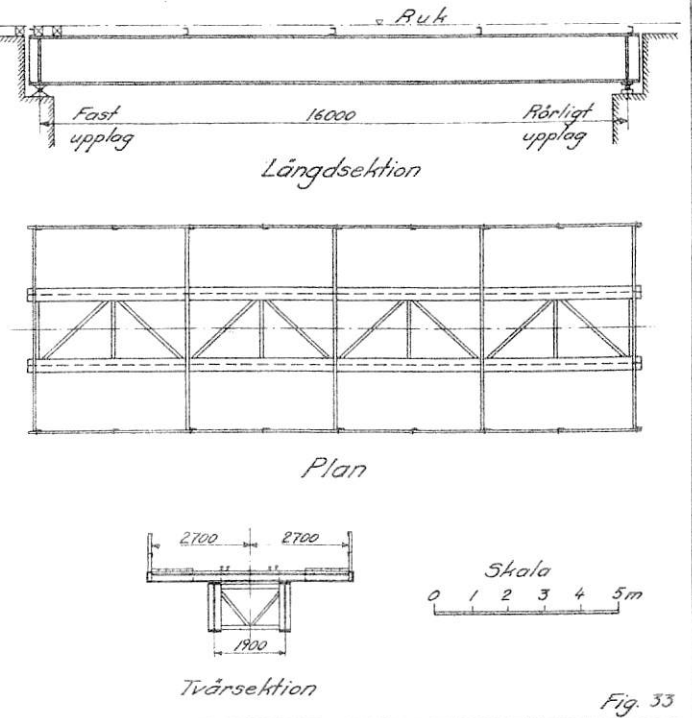


Fig. 33

Stålöverbyggnad (fackverk)

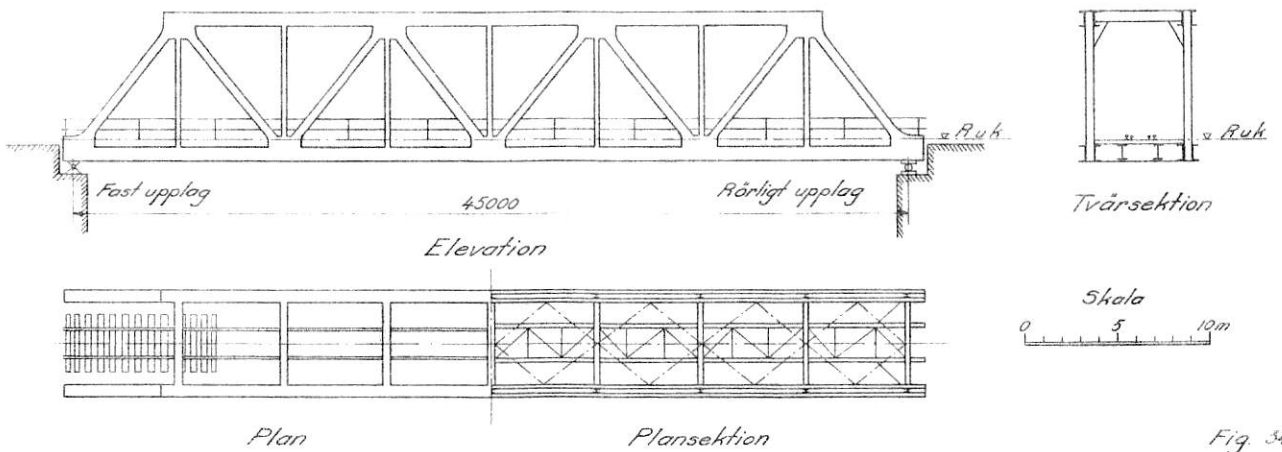


Fig. 34

Stålöverbyggnad (långerbalk)

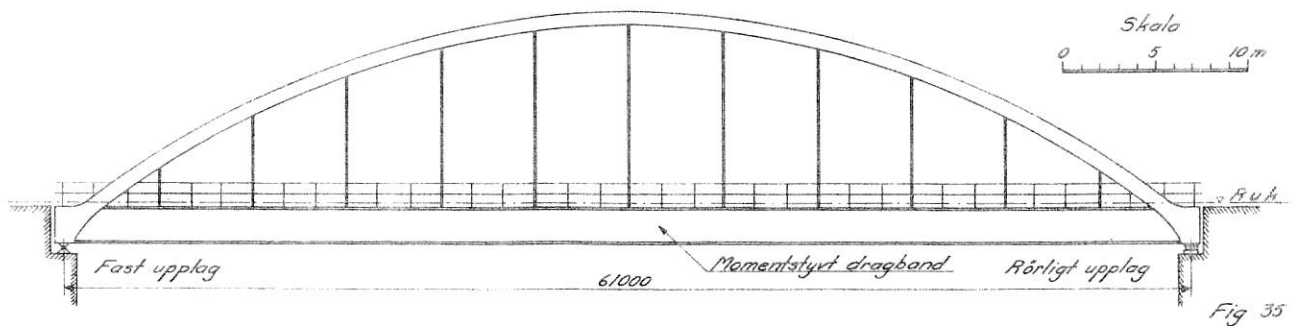


Fig. 35

Stålöverbyggnad (bågbro)

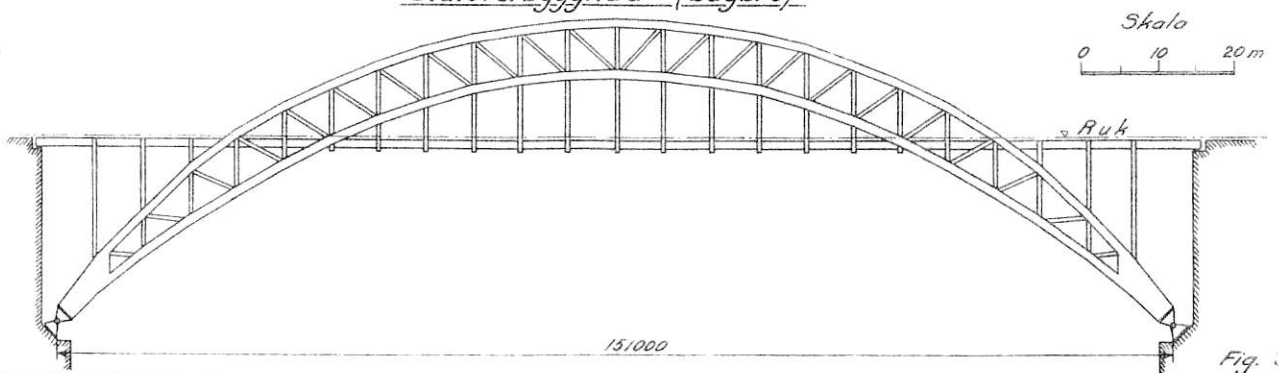


Fig. 36

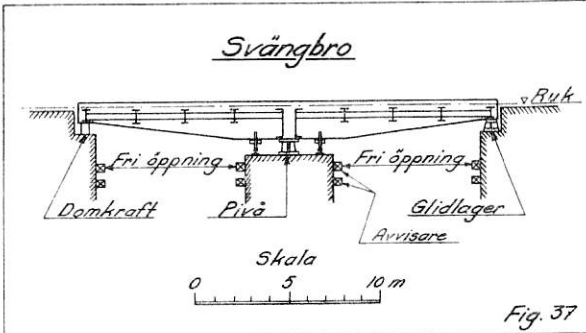


Fig. 37

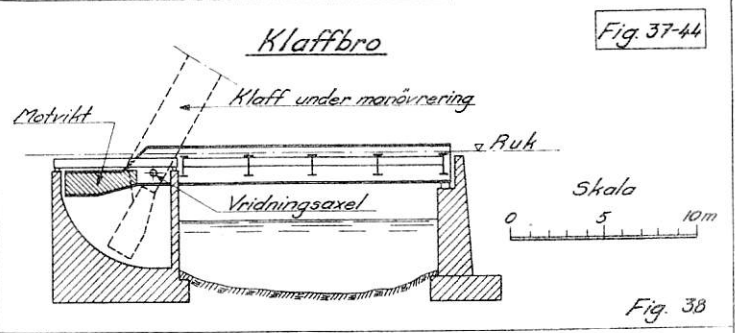


Fig. 37-44

Fig. 38

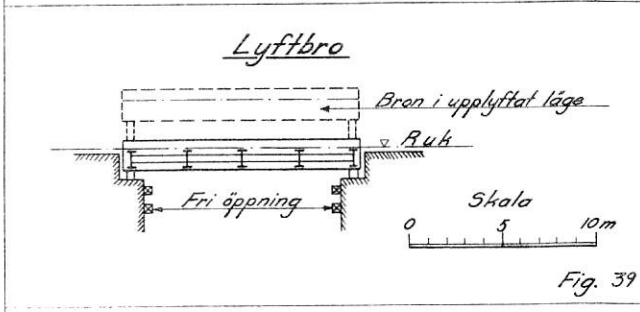


Fig. 39

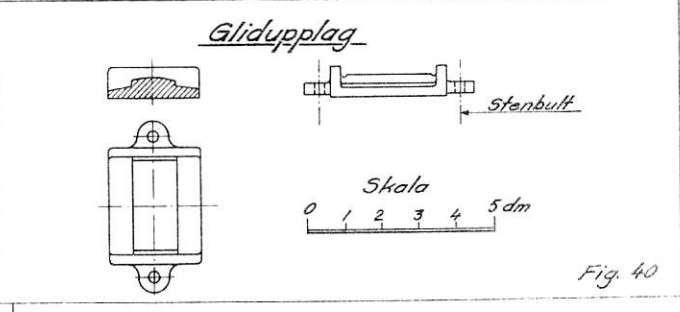


Fig. 40

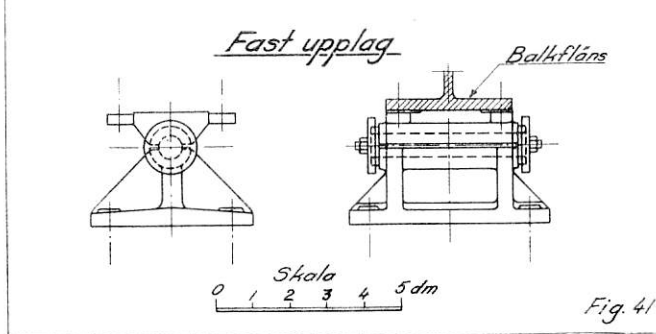


Fig. 41

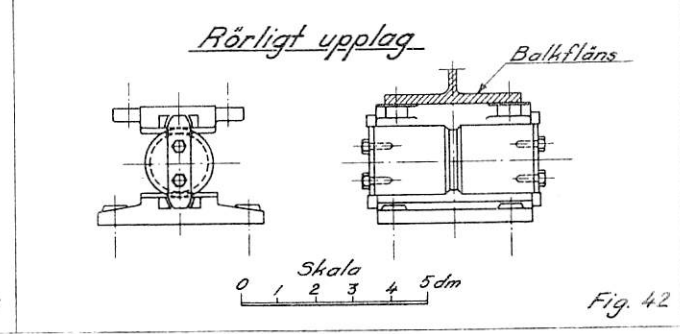


Fig. 42

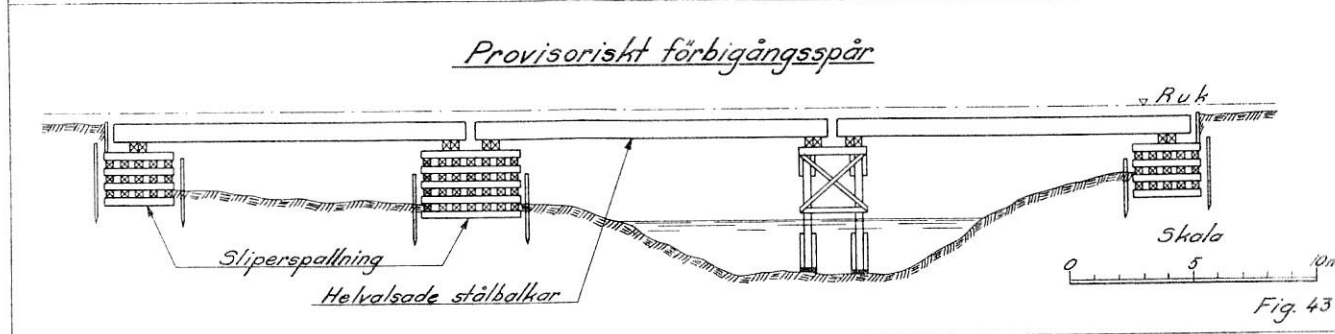


Fig. 43

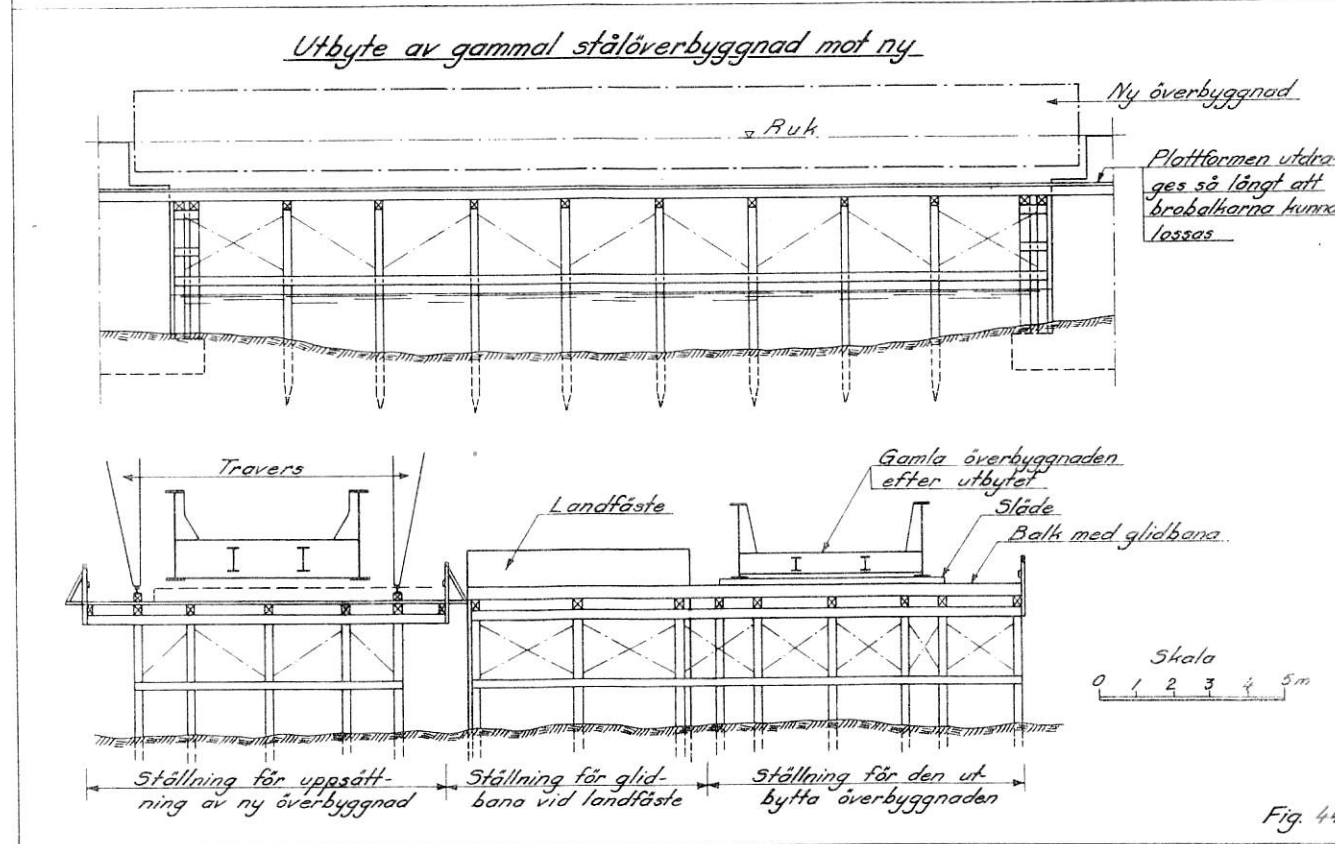


Fig. 44

Rörtrumma

Fig. 45-48

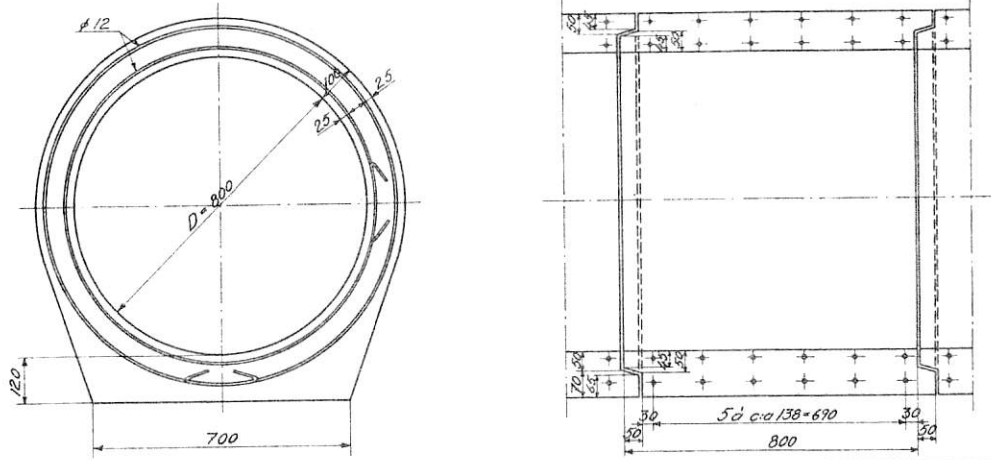


Fig. 45

Trumma av armerad betong

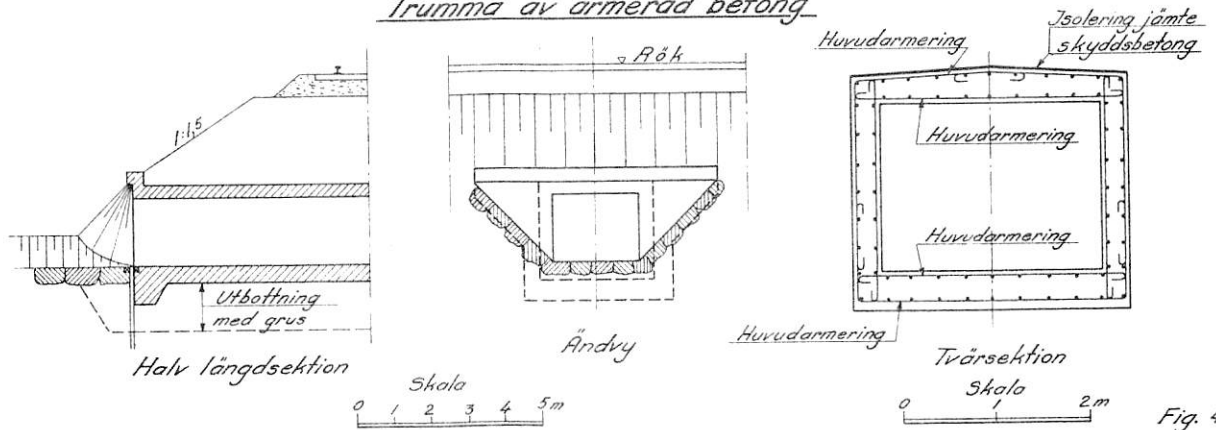


Fig. 46

Trumdäck

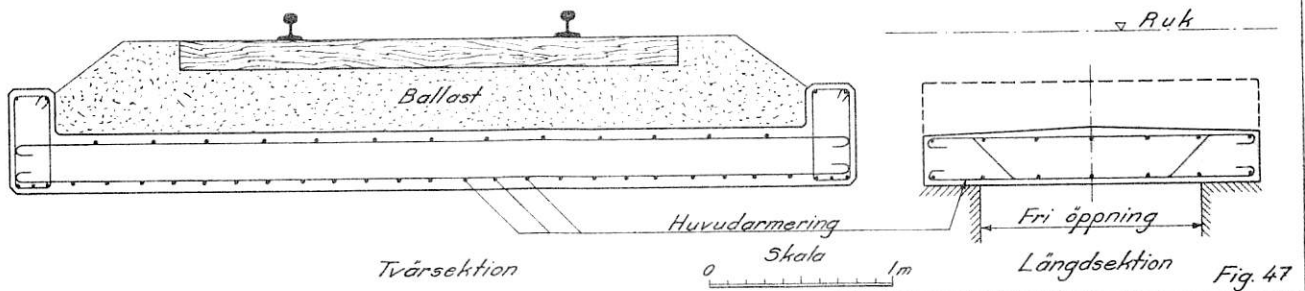


Fig. 47

Betongdäck

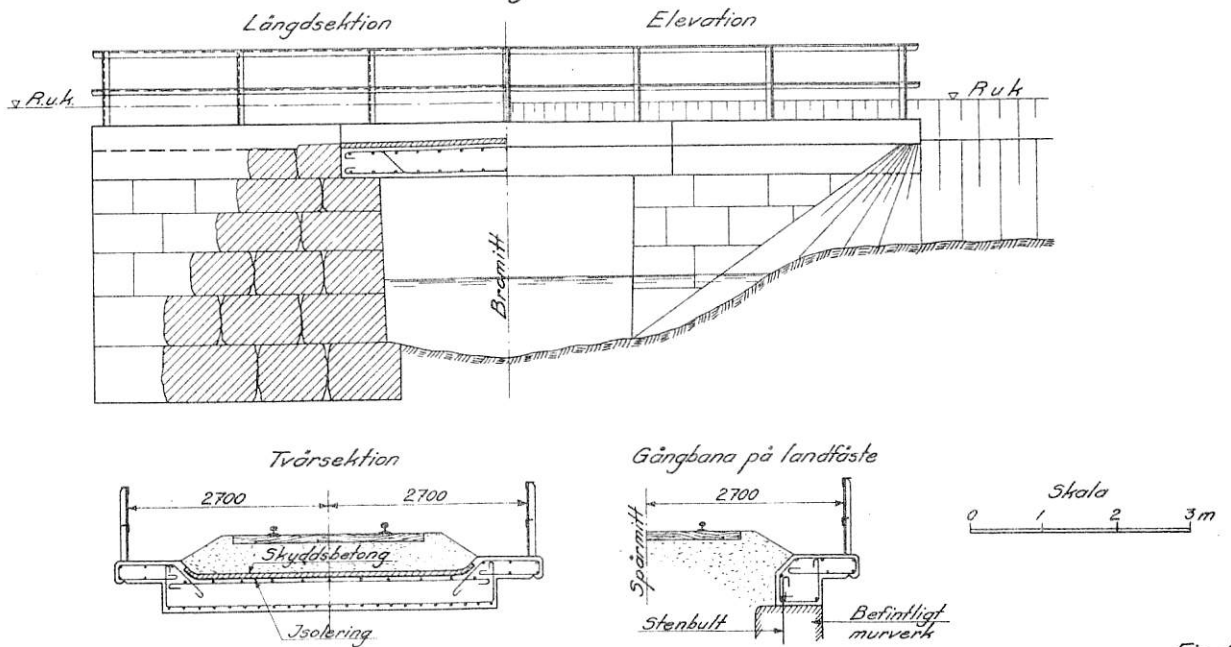


Fig. 48

Rambro av armerad betong

Fig. 49-54

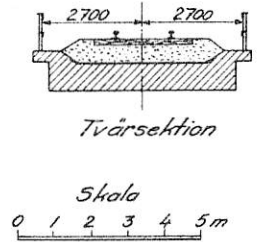
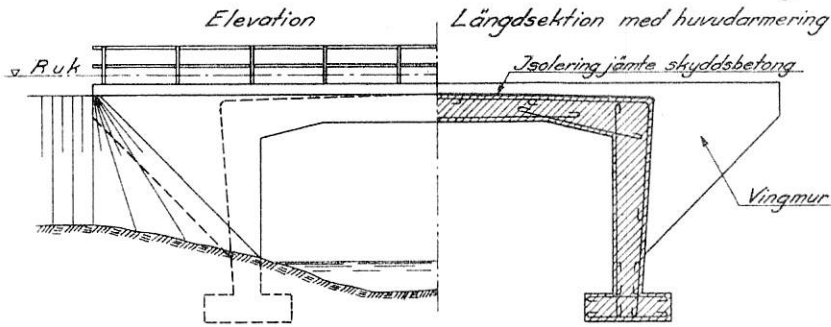


Fig. 49

Valvbro av armerad betong

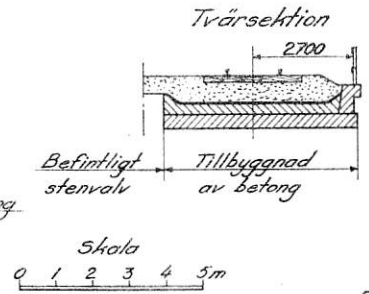
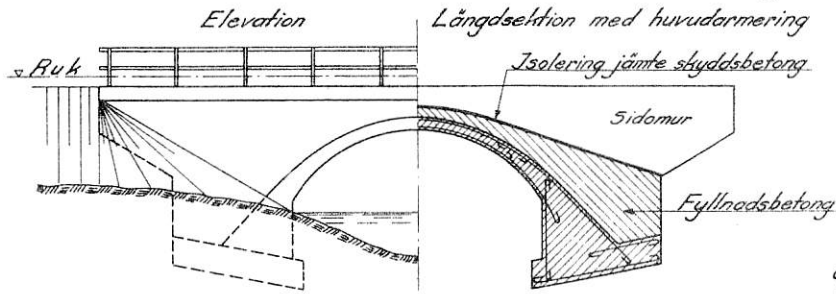


Fig. 50

Stentrumma

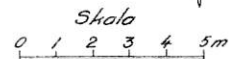
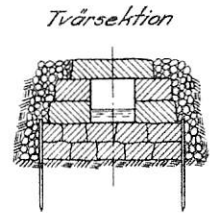
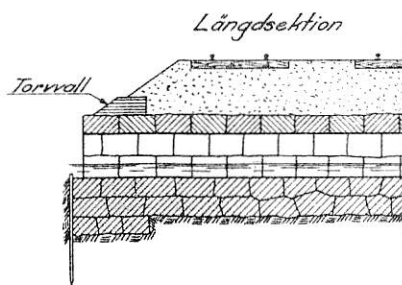
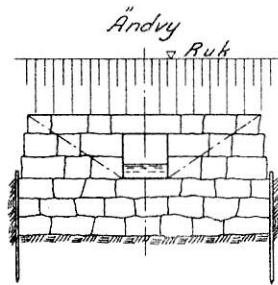


Fig. 51

Formställning för betongram

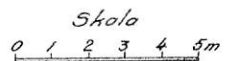
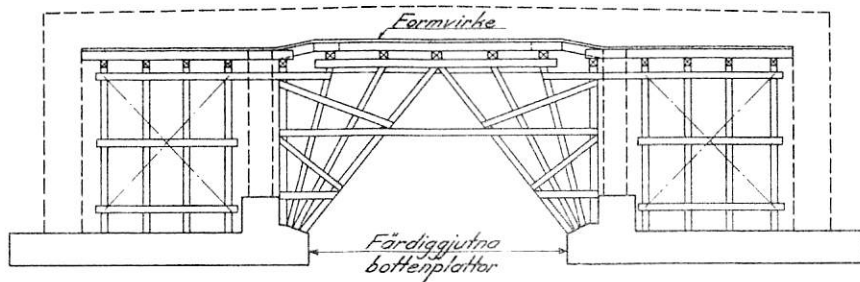


Fig. 52

Formställning för valvbro

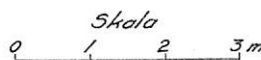
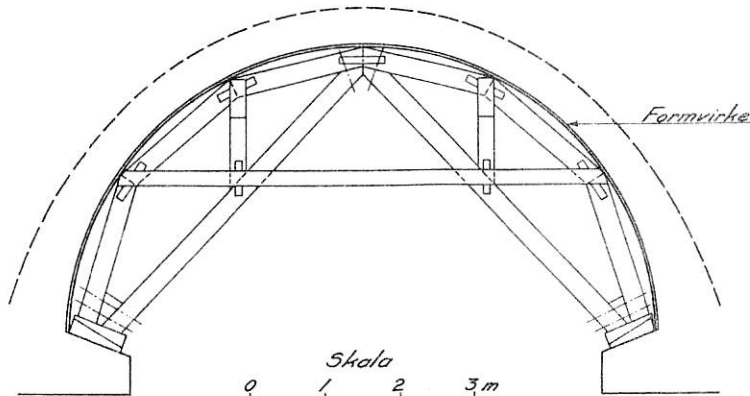
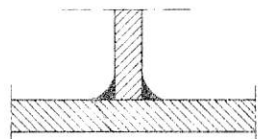


Fig. 53

Kälsvets



Stumsvets



Fig. 54