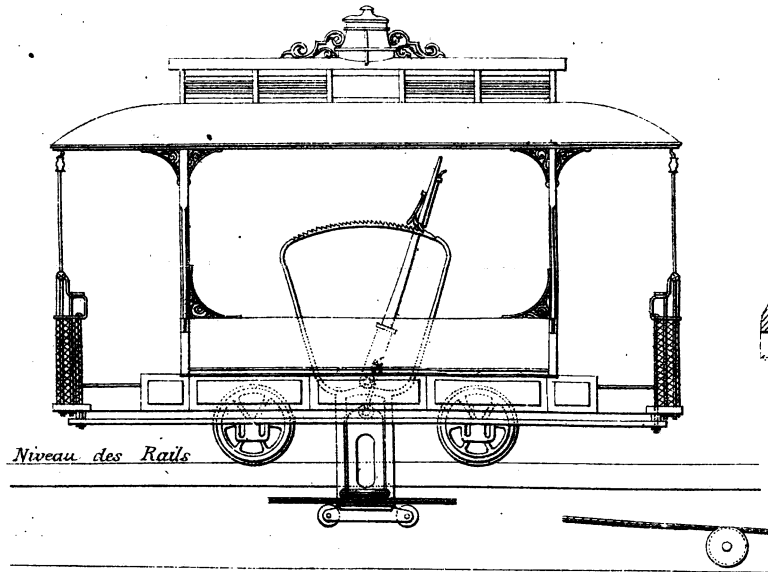


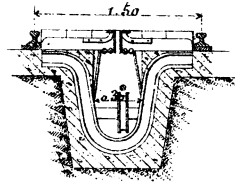
# TRAMWAYS AMÉRICAINS.

## Tramways à traction par câble.

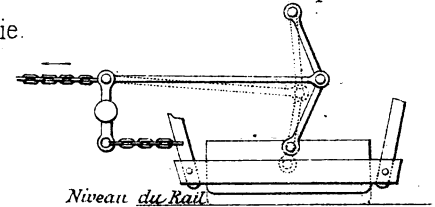
Voiture portant la pince (*grip*)



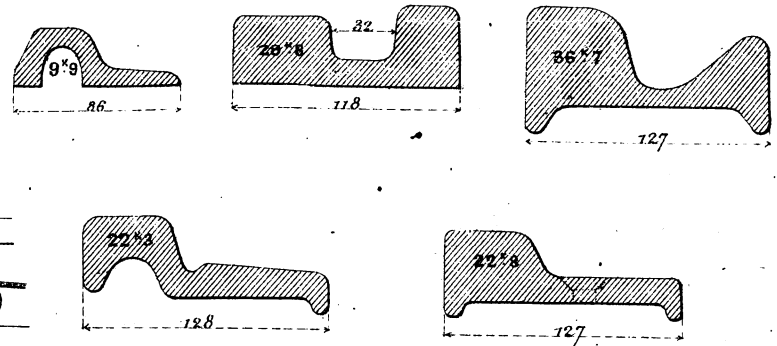
Section transversale de la voie.



Détail d'un frein à patin.

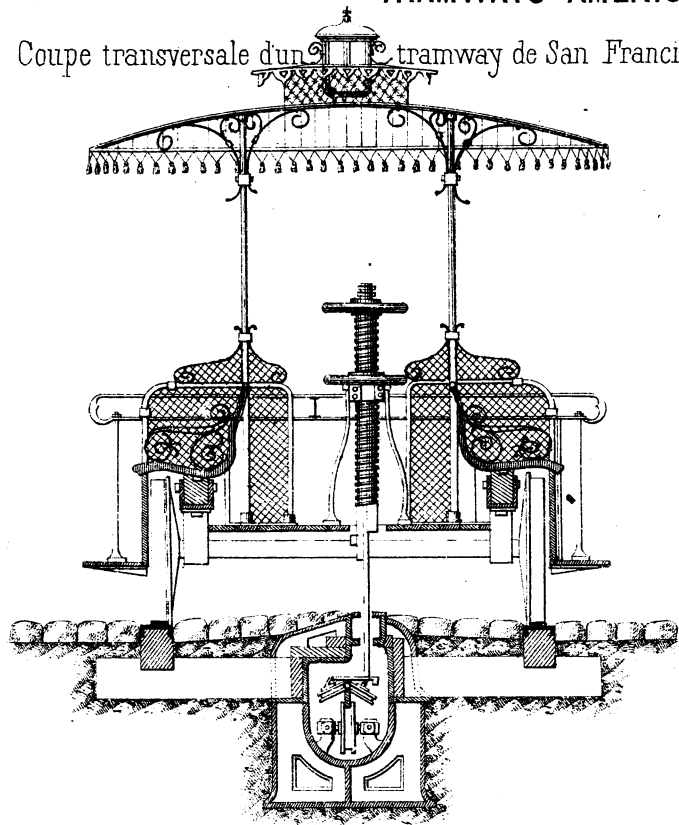


Profils divers de Rails.

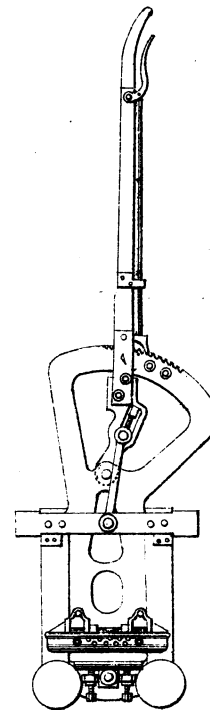


TRAMWAYS AMÉRICAINS.

Coupe transversale d'un tramway de San Francisco.

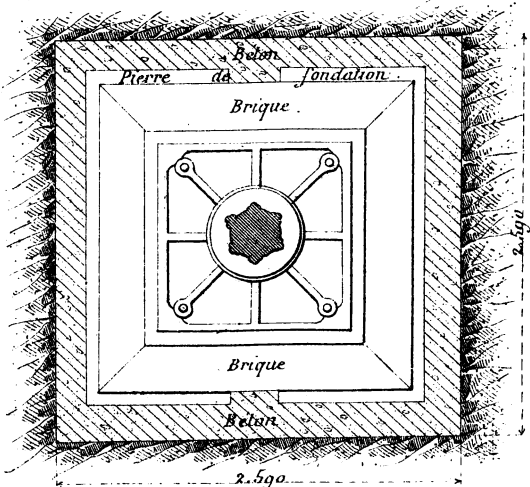
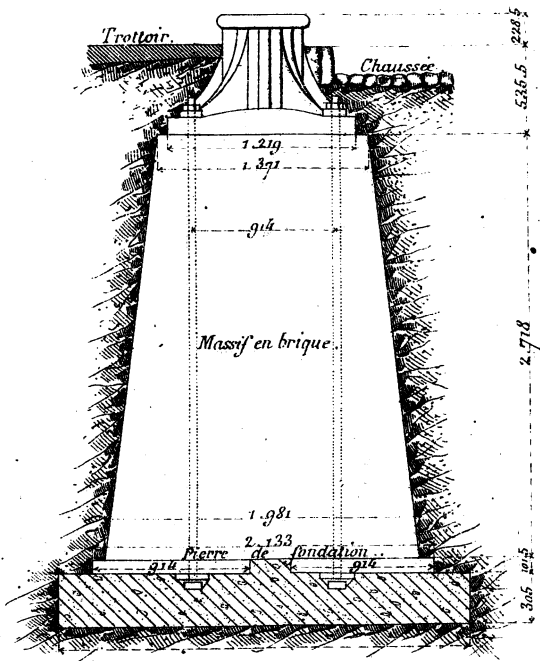


Détail d'une pince (Grip.)



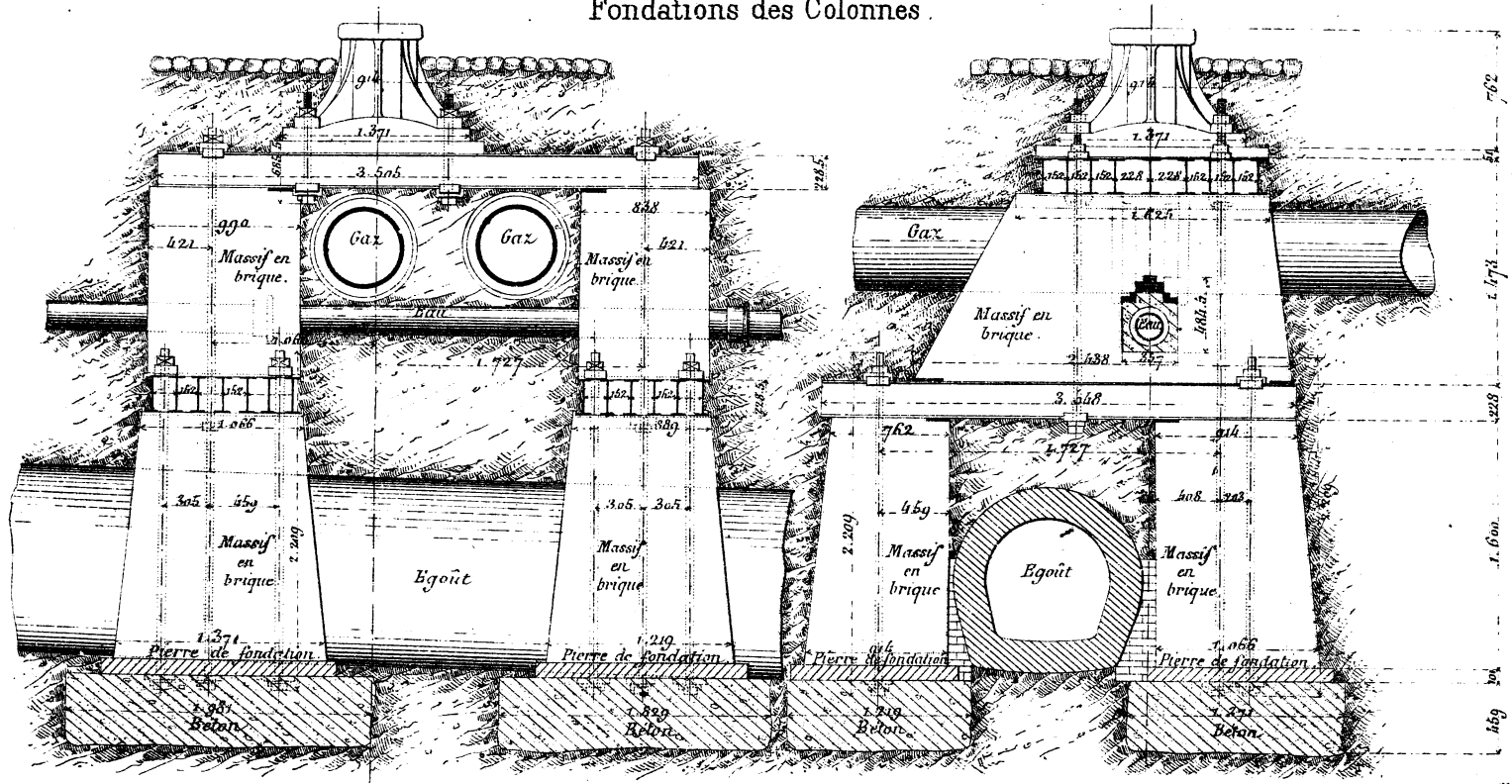
# CHEMIN DE FER MÉTROPOLITAIN DE NEW-YORK.

## Fondations des Colonnes.

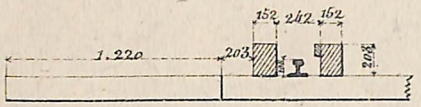


# CHEMIN DE FER MÉTROPOLITAIN DE NEW-YORK .

## Fondations des Colonnes .



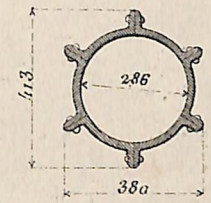
Section de la voie



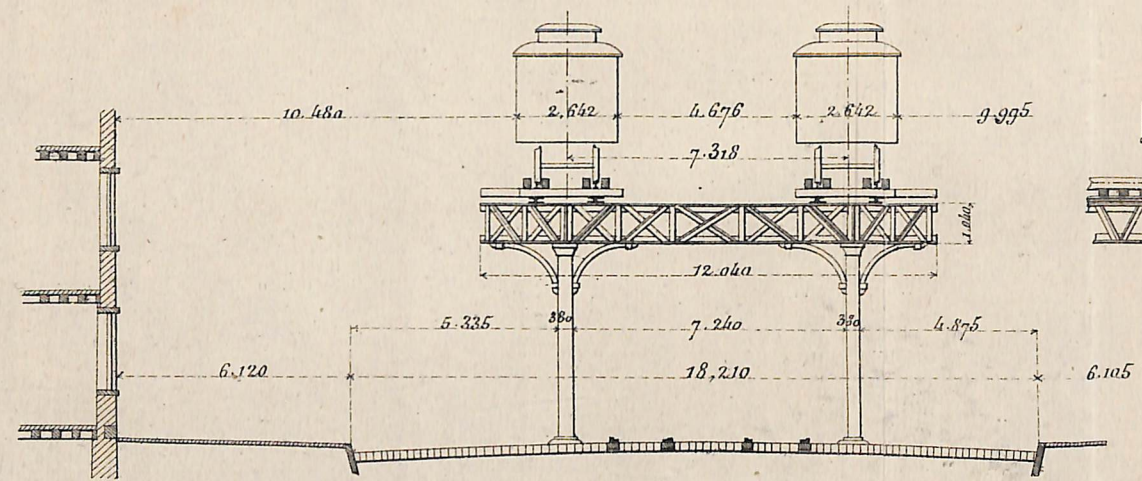
# CHEMIN DE FER MÉTROPOLITAIN DE NEW-YORK.

## Ligne de la 2<sup>me</sup> Avenue.

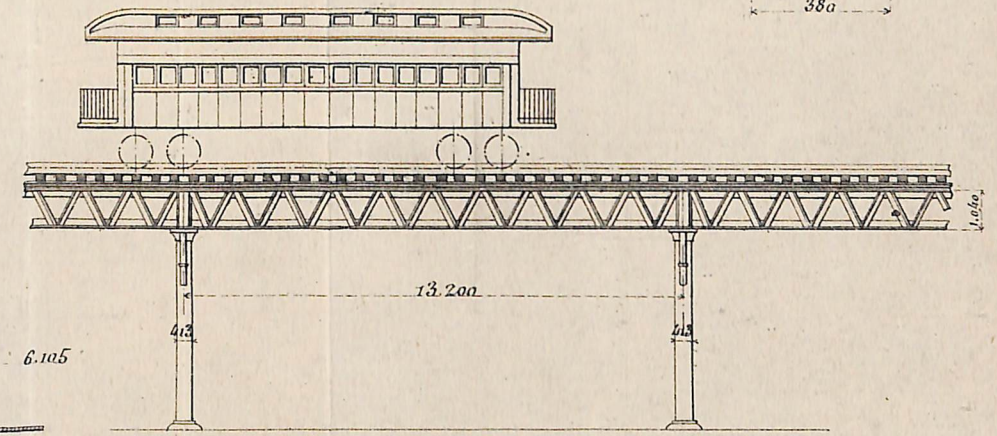
Section des colonnes.



Coupe transversale.

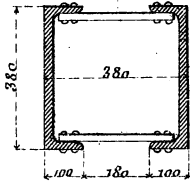


Coupe longitudinale.



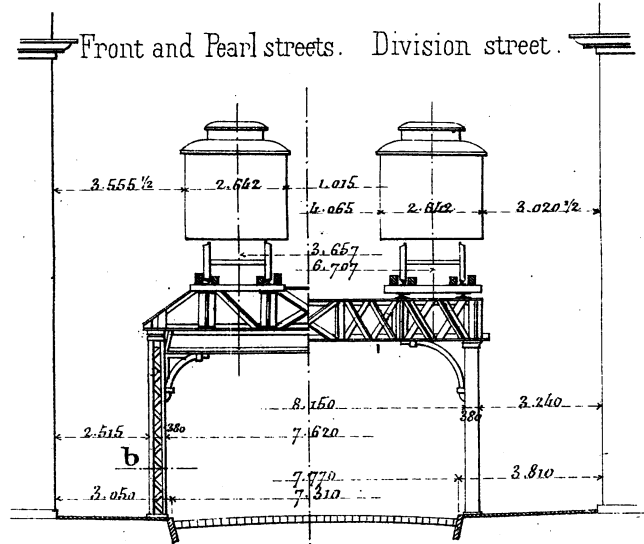
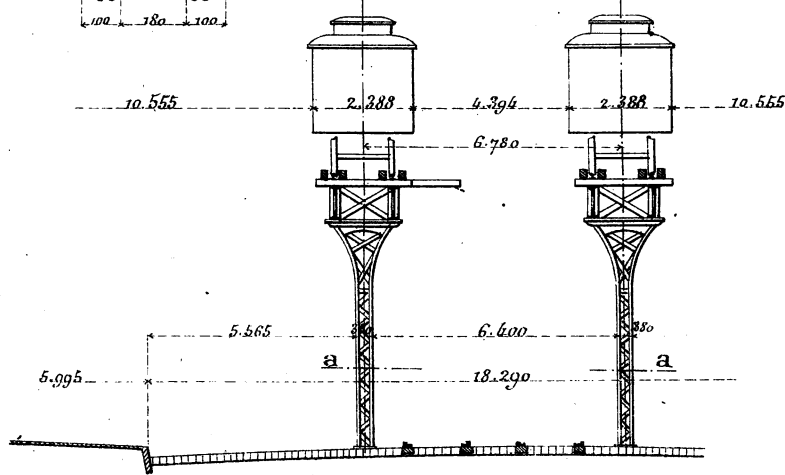
CHEMIN DE FER MÉTROPOLITAIN DE NEW-YORK.

Section des colonnes a et b.

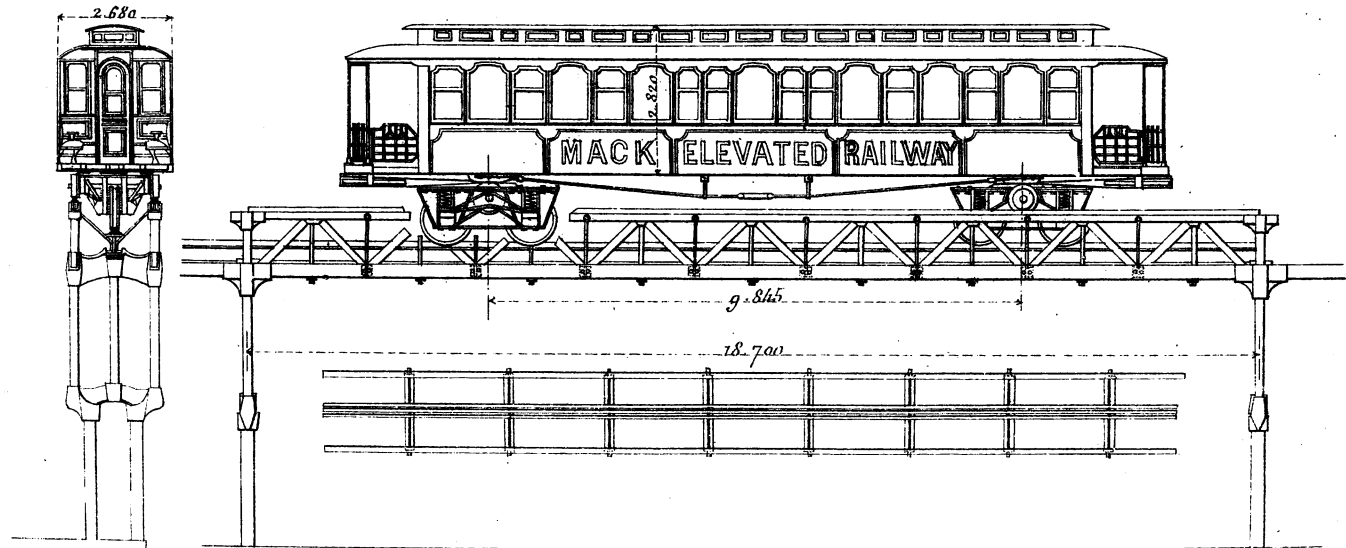


Coupes transversales.

Ligne de la 9<sup>me</sup> Avenue.



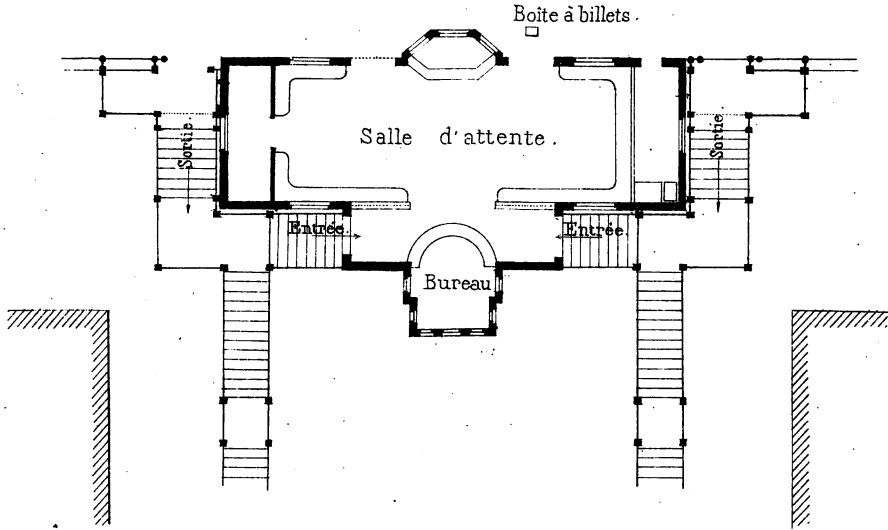
PROJET DE CHEMIN DE FER ELEVE DE M<sup>r</sup> MACK, DE BOSTON .



# CHEMIN DE FER MÉTROPOLITAIN DE NEW-YORK.

## Plan d'une Station.

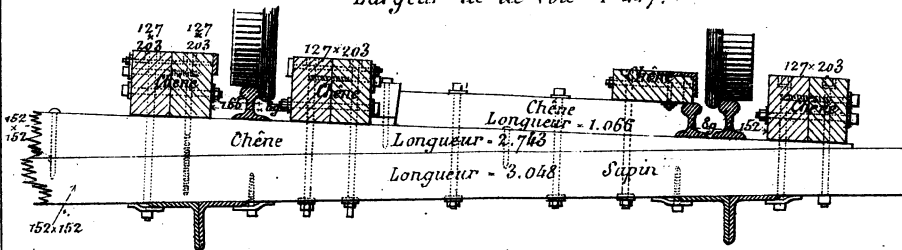
*Axe de la voie de droite.*



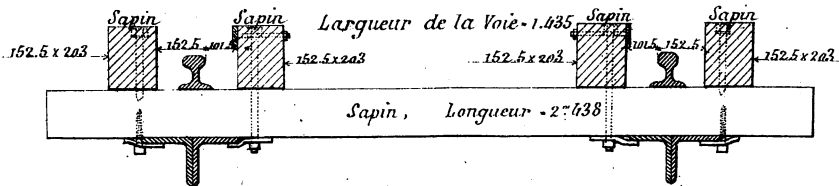
### Sections de la Voie.

En courbe.

*Largueur de la Voie - 1.447.*



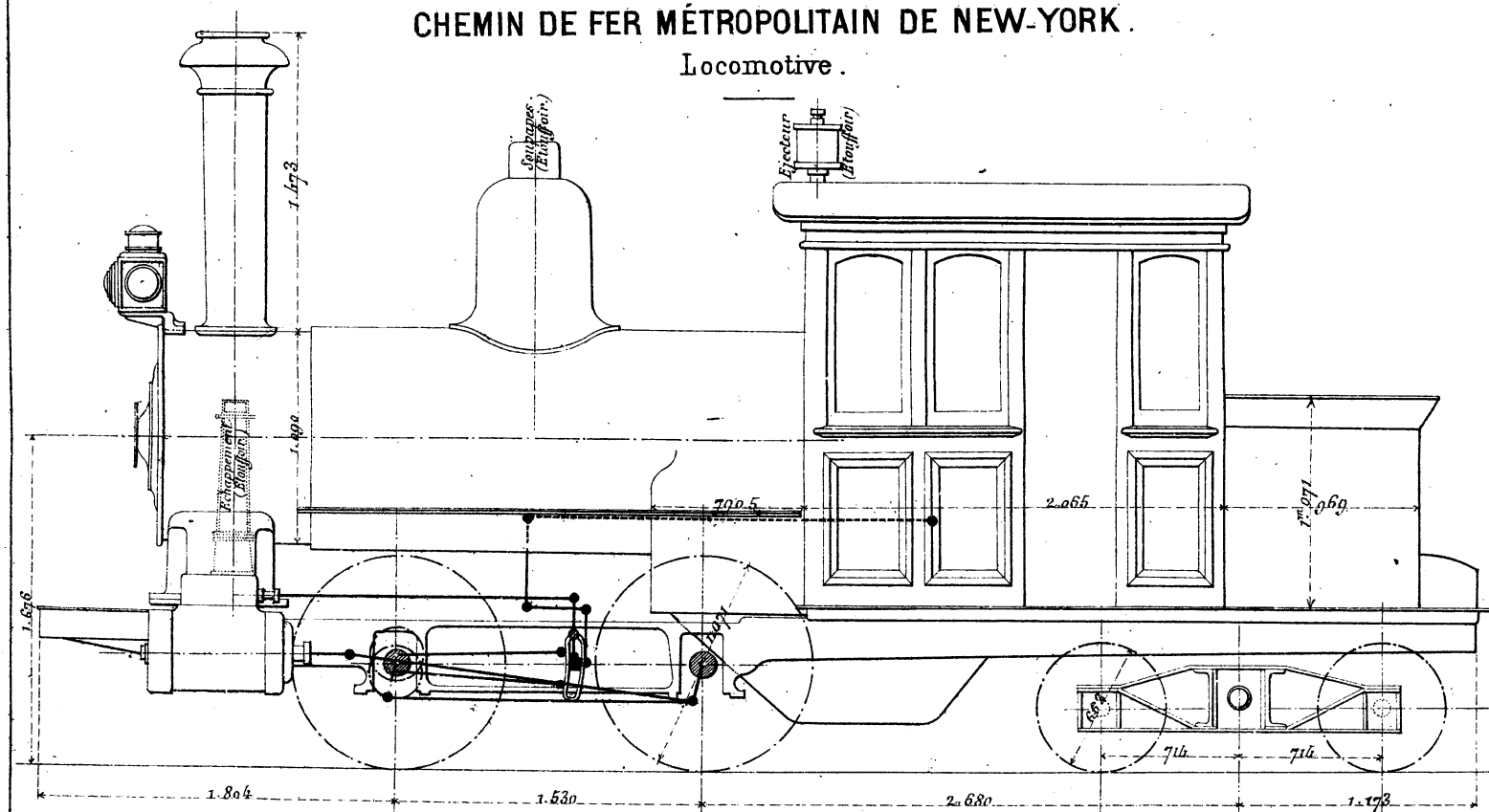
En alignement droit.





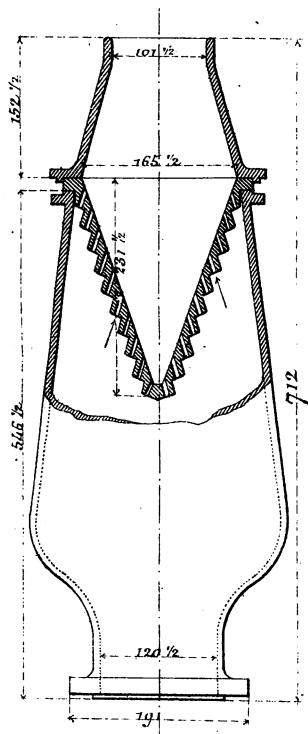
# CHEMIN DE FER MÉTROPOLITAIN DE NEW-YORK.

## Locomotive.

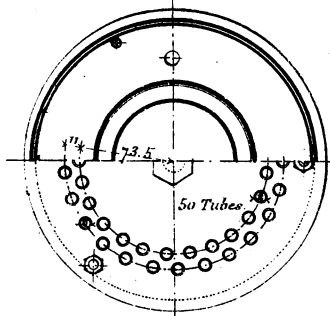
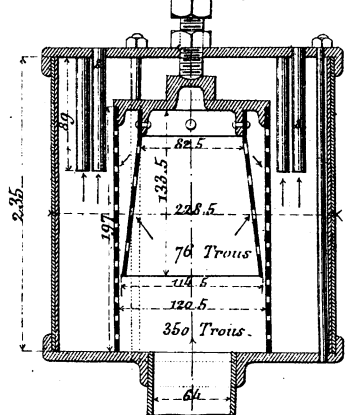


LOCOMOTIVE DU MÉTROPOLITAIN DE NEW-YORK.

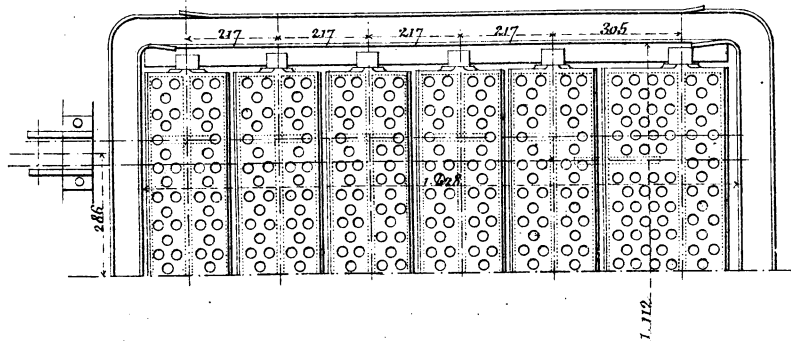
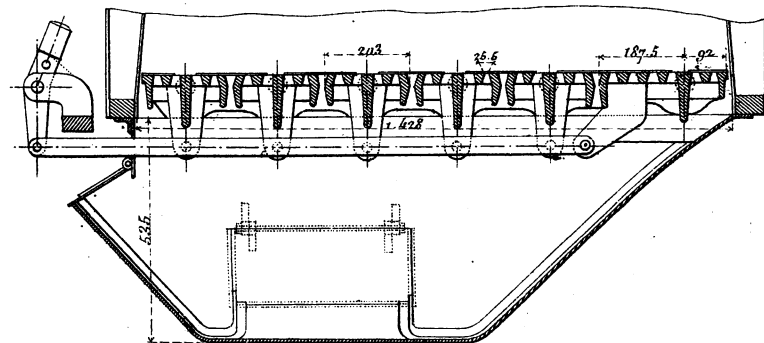
Etouffoir du tuyau d'échappement



Etouffoir pour éjecteurs.

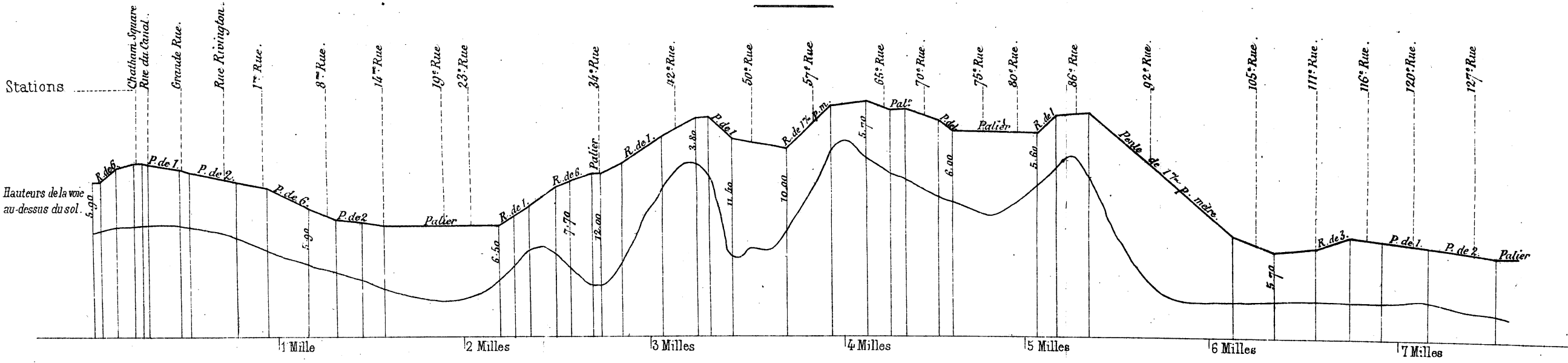


Grille et Cendrier.

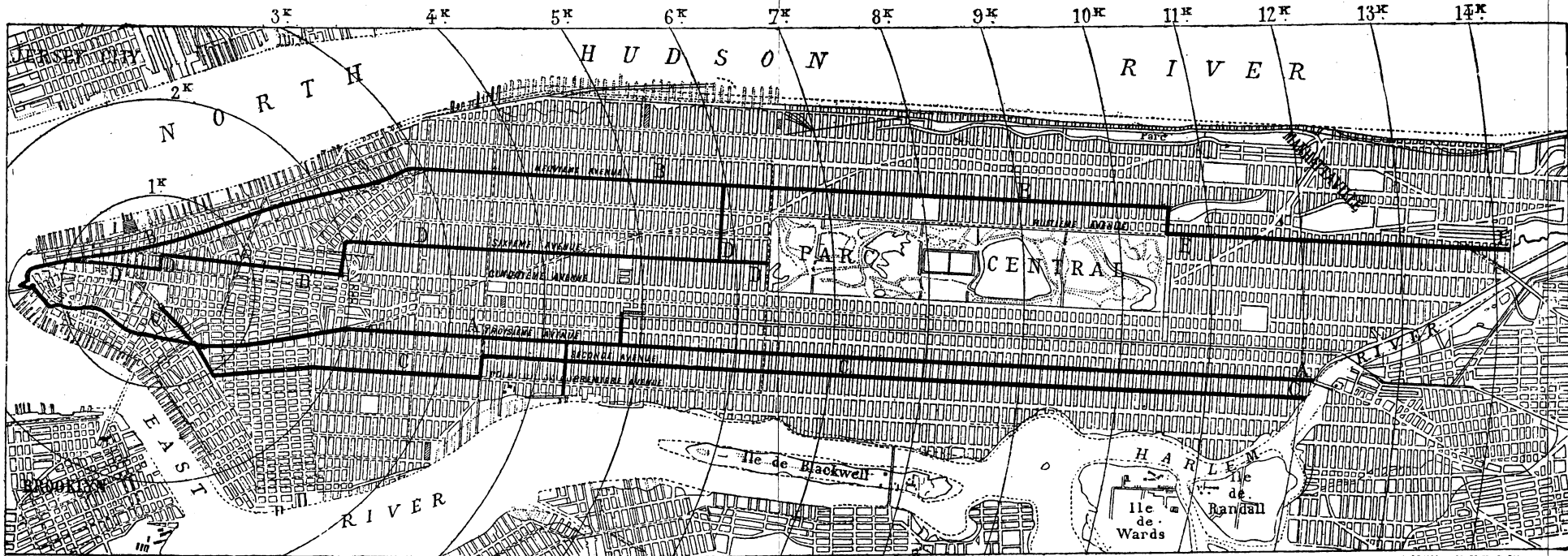


# CHEMIN DE FER MÉTROPOLITAIN DE NEW-YORK.

## Profil en long de la ligne de la deuxième Avenue.



PLAN DE LA VILLE DE NEW-YORK.

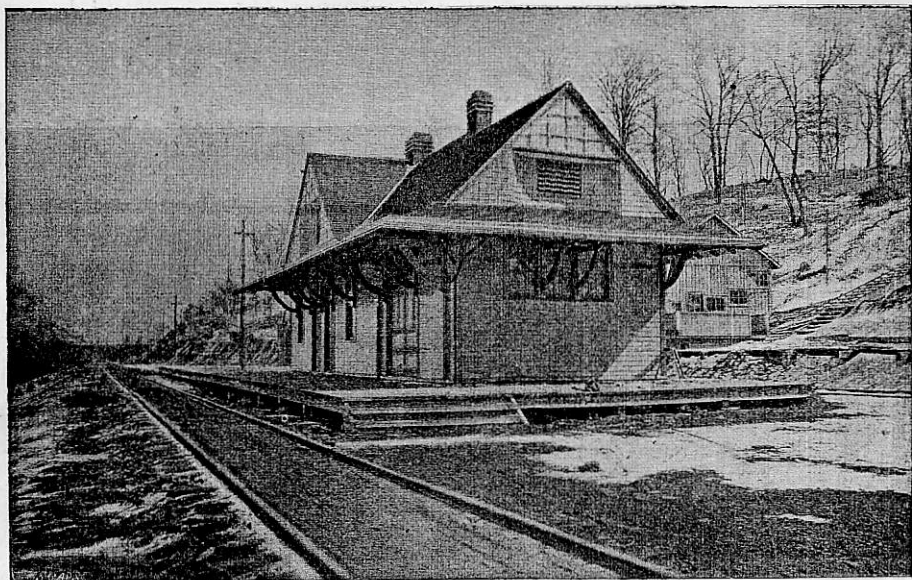


Tracé du Chemin de fer Métropolitain

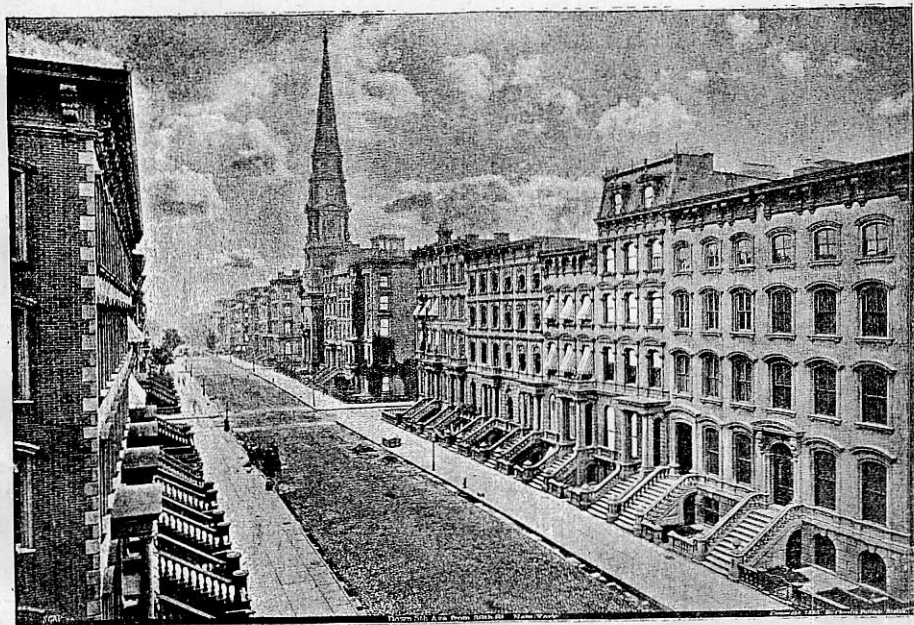
LEPLAN-66

A. BAUVE & COURCIER, PARIS

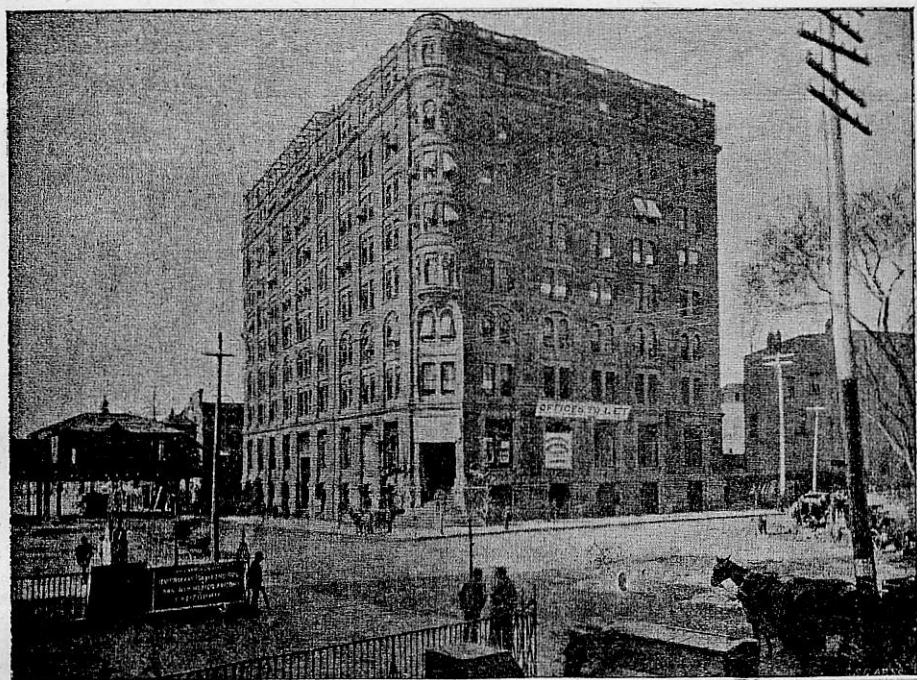
## CHEMINS DE FER DES ÉTATS-UNIS D'AMÉRIQUE



Modèle de Station (Far West).

New-York. — 5<sup>e</sup> avenue.

CHEMINS DE FER DES ÉTATS-UNIS D'AMÉRIQUE



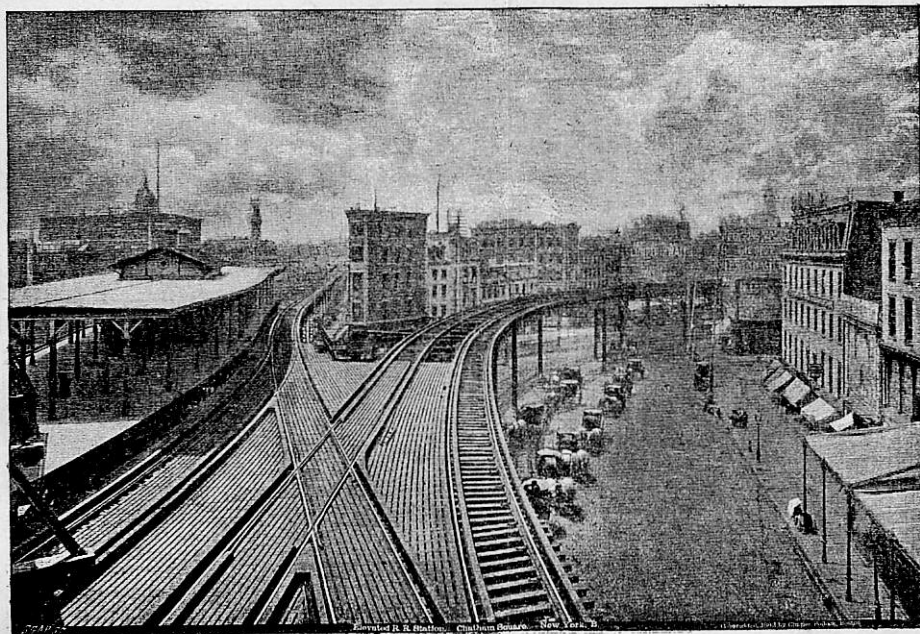
New-York. — Washington Buildings.



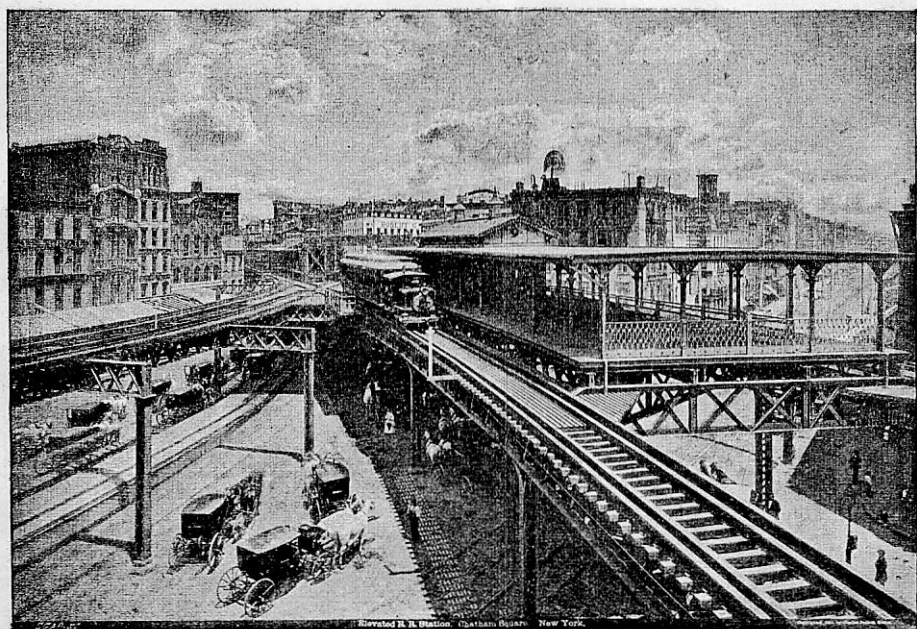
New-York. — Gare centrale, 42<sup>e</sup> rue.



CHEMIN DE FER MÉTROPOLITAIN DE NEW-YORK

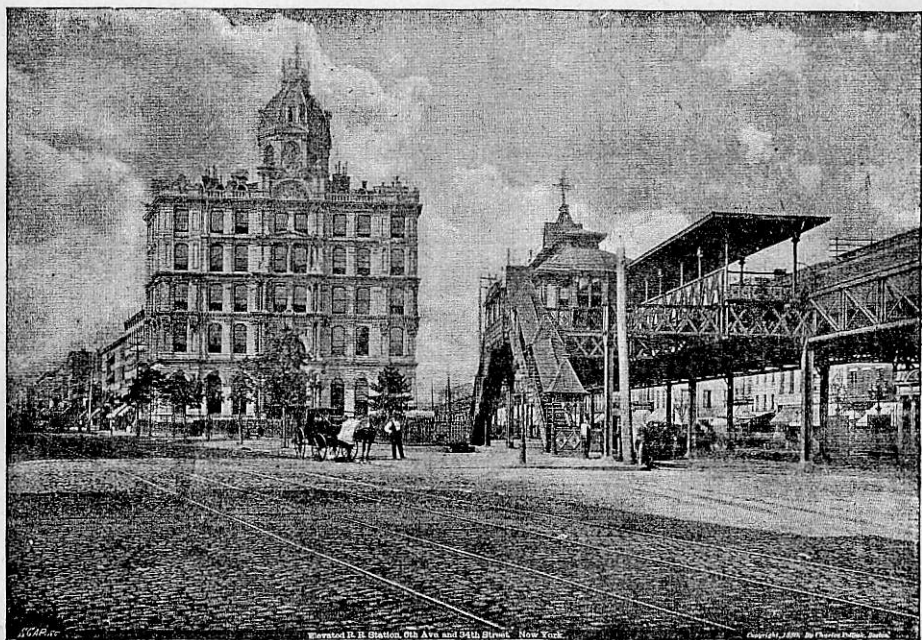


Station de Chatham Square.

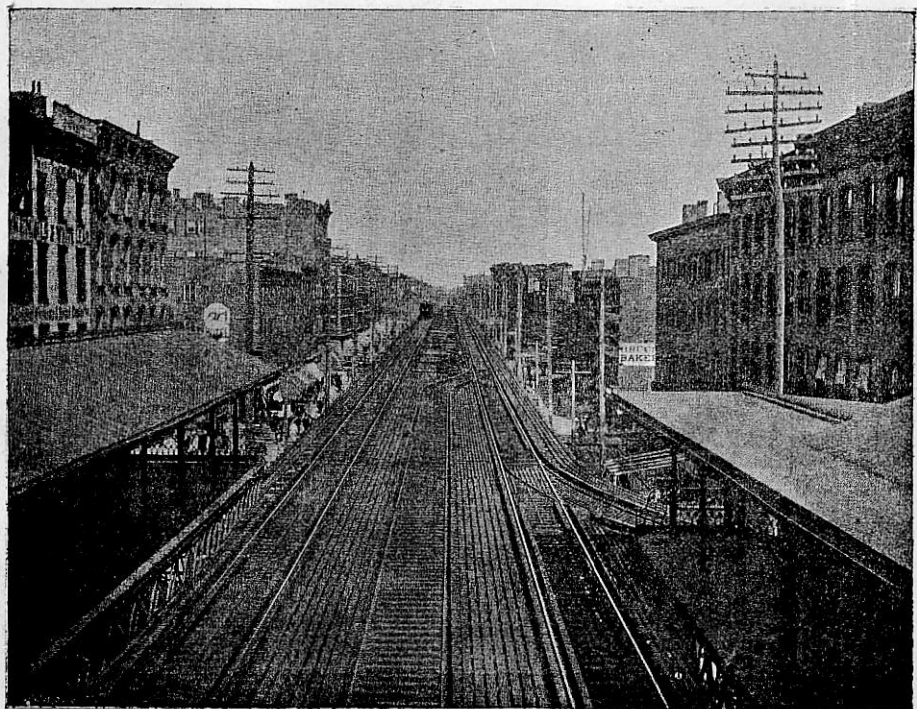


Station de Chatham Square.

CHEMIN DE FER MÉTROPOLITAIN DE NEW-YORK



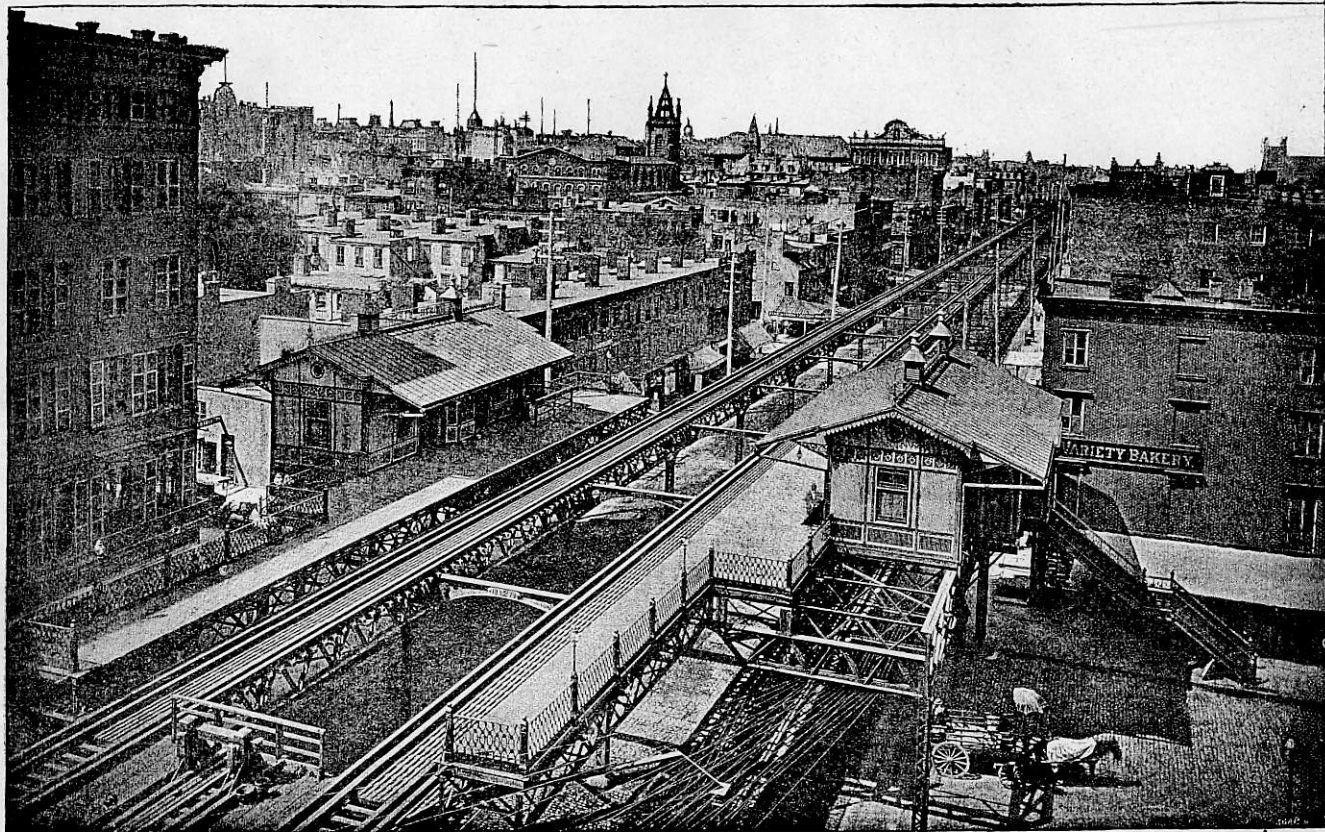
6° avenue, 34° rue.



3° avenue.

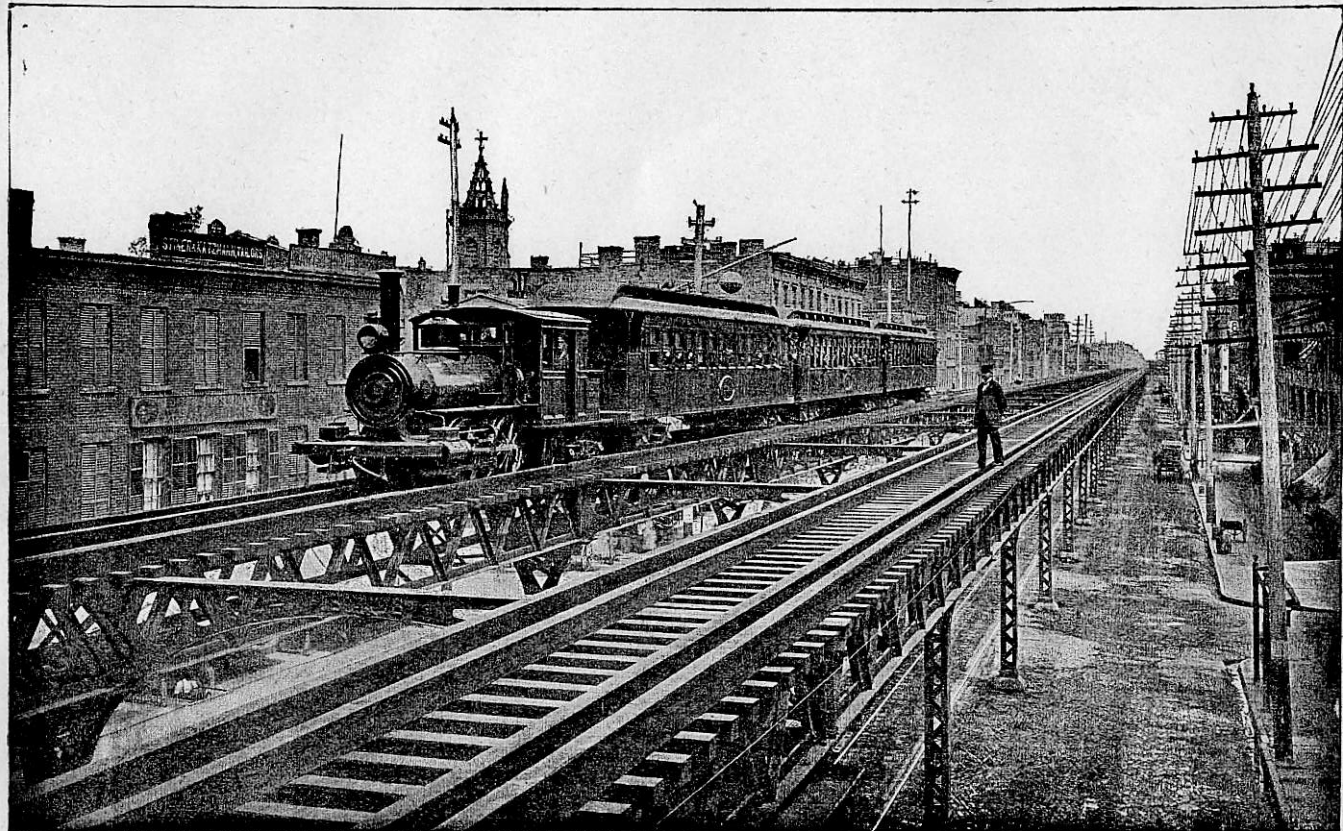


CHEMIN DE FER MÉTROPOLITAIN DE NEW-YORK

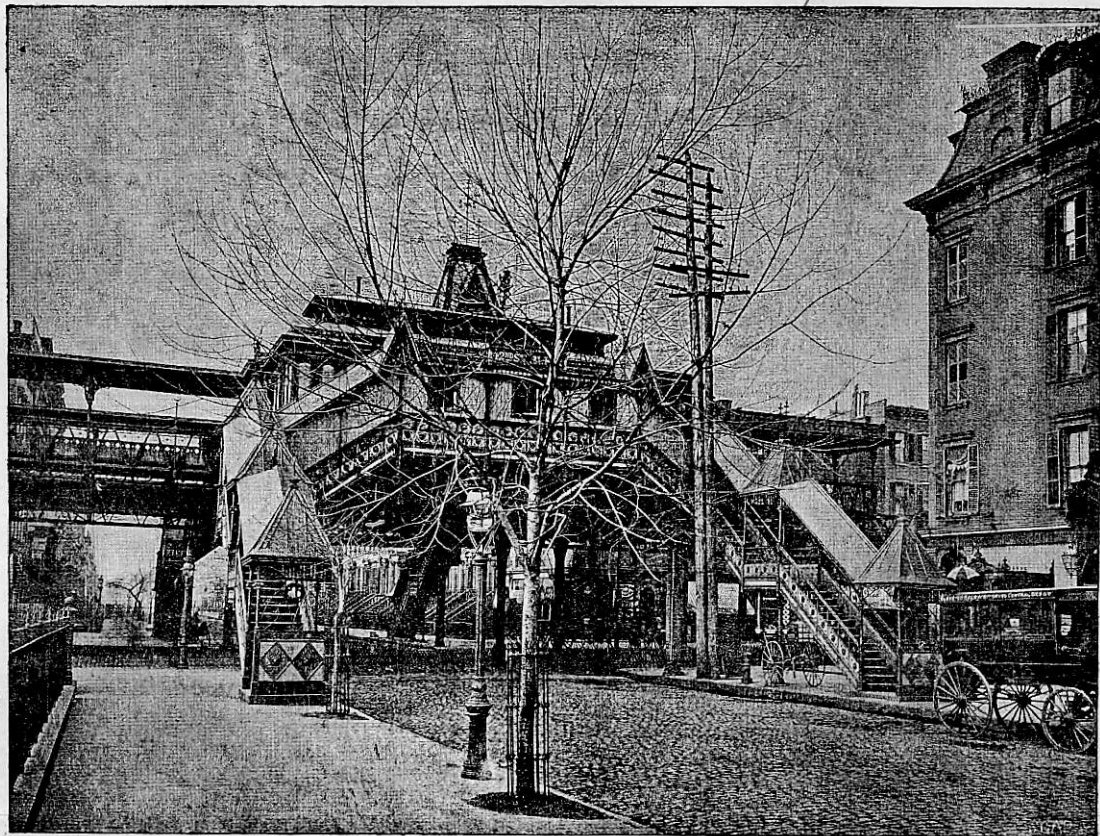


3° avenue, 9° rue.

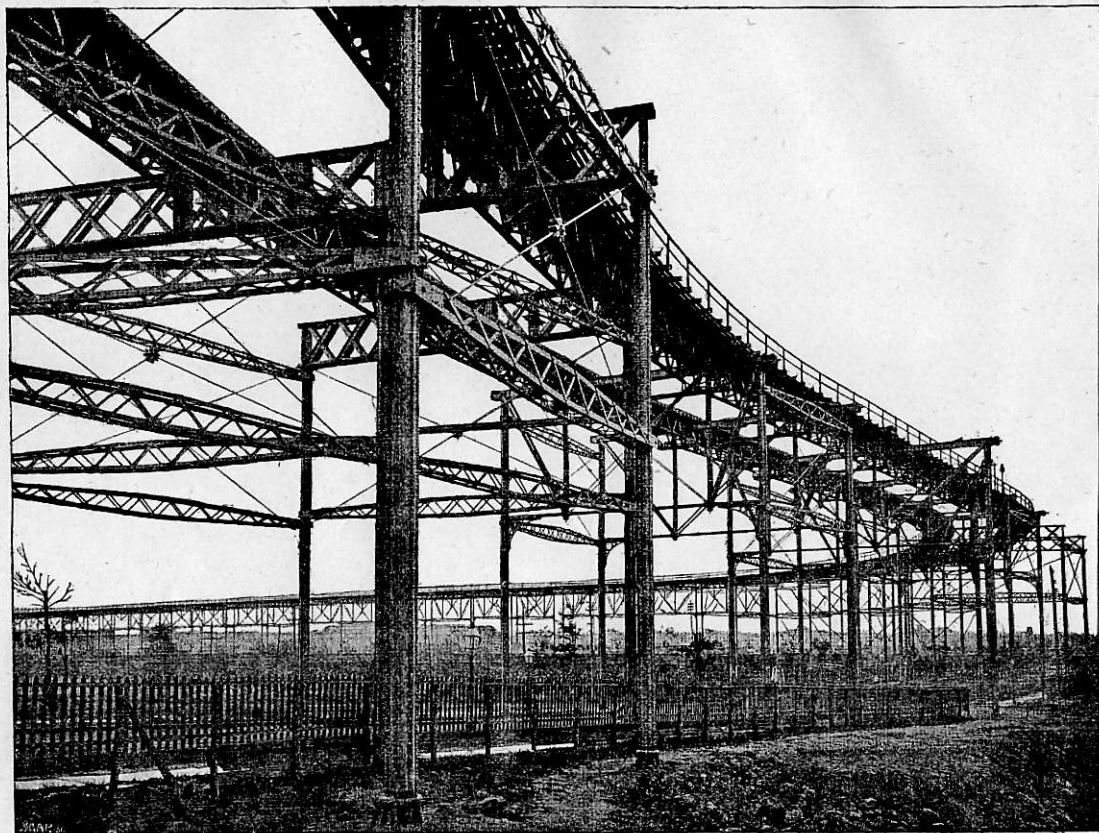
CHEMIN DE FER MÉTROPOLITAIN DE NEW-YORK



Train de la 3<sup>e</sup> avenue.



6<sup>e</sup> avenue, 42<sup>e</sup> rue.



110<sup>e</sup> rue, courbe n° 2.